



Company : Apache

Well : Dory-1

Interval : 496.00 - 3865.09 meters

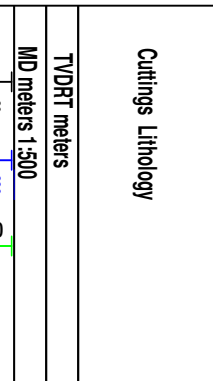
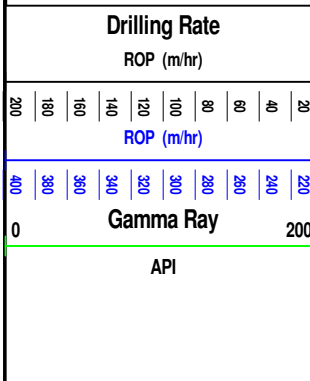
Created : 16/Nov/2008 8:09:11 AM



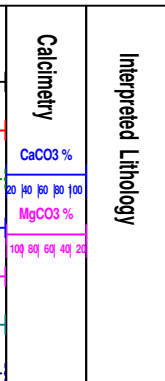
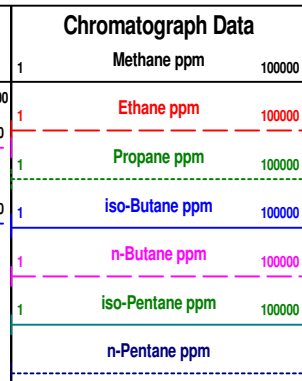
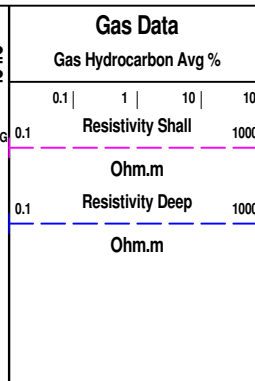
INTEQ

FORMATION EVALUATION LOG

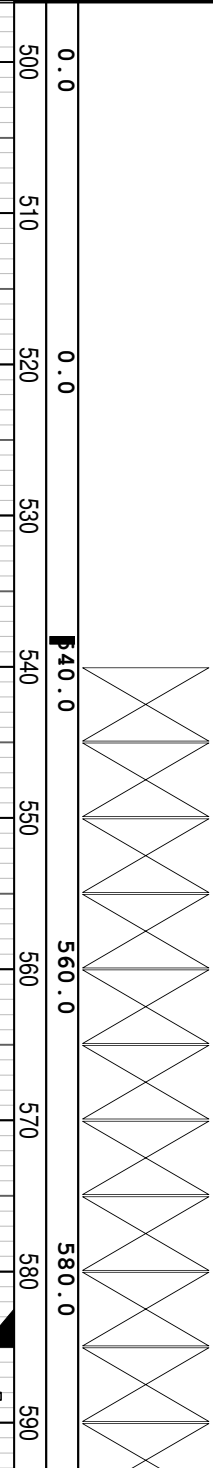
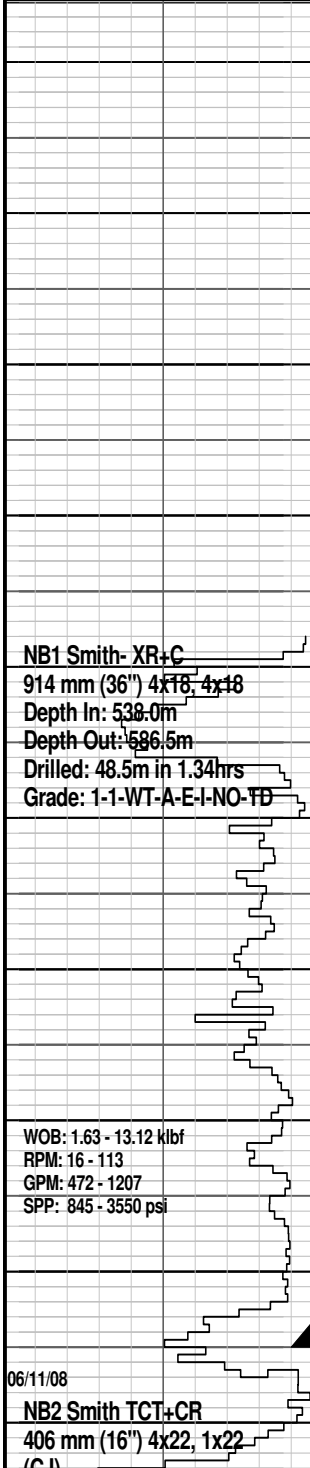
Drilling Rate		MD meters	TVDRT meters	Cuttings Lithology	Oil Show	Visual Inferred Porosity	Gas Data		Chromatograph Data		Calcmetry	Interpreted Lithology	Lithology Description
ROP (m/hr)	ROP (m/hr)						Gas Hydrocarbon Avg %	Methane ppm	Ethane ppm	Propane ppm			
200	200	500	0.0				0.1 1 10 100	1	100000	100000			
180	180	510					0.1	1	10000	10000			
160	160	520	0.0										
140	140	530											
120	120	540	0.0										
100	100	550											
80	80	560	560.0										
60	60	570											
40	40	580	580.0										
20	20	590											
		590											



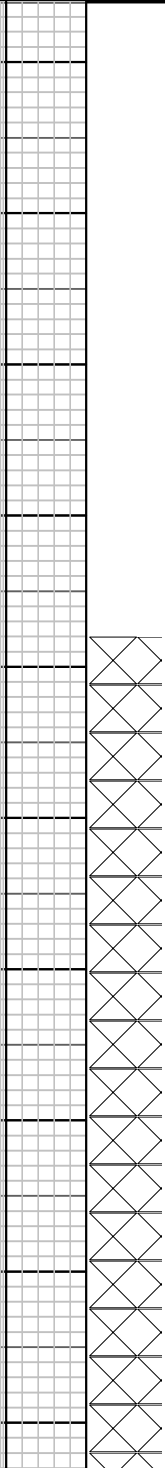
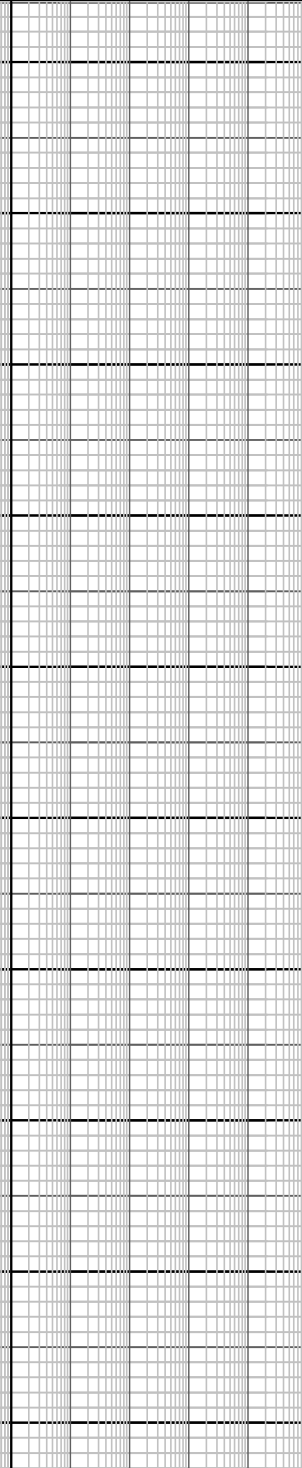
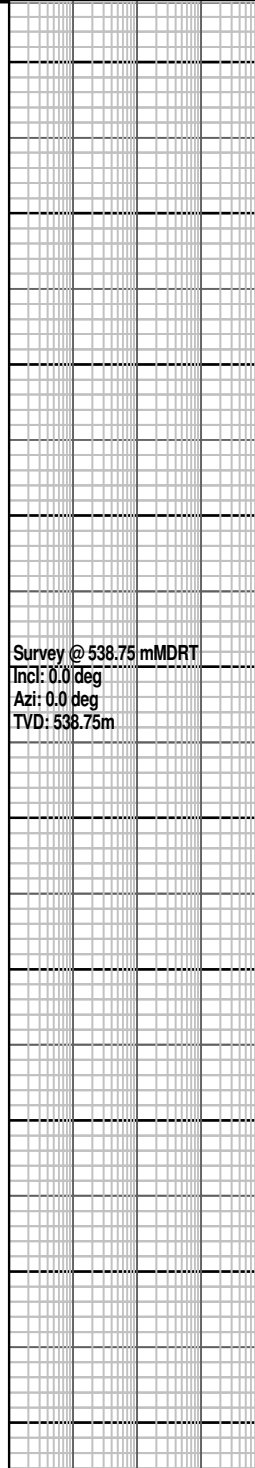
Oil Show
P F G
Visual Inferred Porosity
P F G



Interpreted Lithology



Cuttings Lithology



Lithology Description

NB1 Smith- XR+C
914 mm (36") 4x18, 4x18
Depth In: 538.0m
Depth Out: 586.5m
Drilled: 48.5m in 1.34hrs
Grade: 1-1-WT-A-E-I-NO-TD

WOB: 1.63 - 13.12 kJbf
RPM: 16 - 113
GPM: 472 - 1207
SPP: 845 - 3550 psi

06/11/08
NB2 Smith TCT+CR
406 mm (16") 4x22, 1x22
(CJ)

Survey @ 538.75 mMDRT
Incl: 0.0 deg
Azi: 0.0 deg
TVD: 538.75m

Dory-1 spudded @ 03:30hrs on 5th November 2008

All depth measurements in meters referenced from Rotary table (RT)
RT- AHD= 21.5 m
Water depth = 517.25 mMDRT
RT - Seabed = 538.75 mMDRT

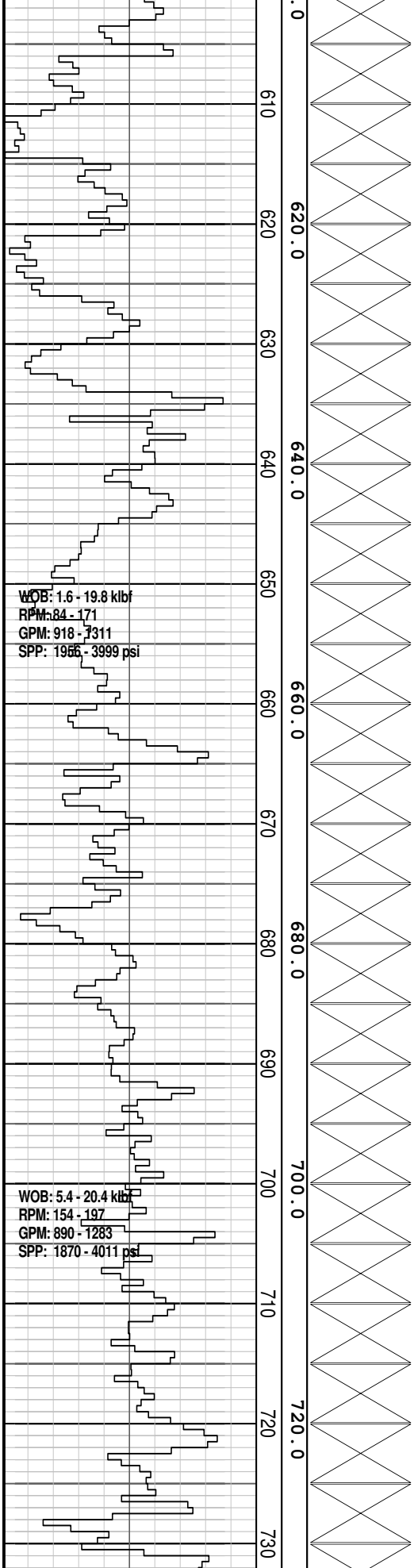
Drill 914mm hole w/ seawater and hi-vis sweeps. Returns to Seabed.

Set 30" conductor casing @ 585.0mMDRT

Drill 914mm hole to 586.50 mMDRT

Drill 406mm hole w/ seawater and hi-vis gel sweeps. Returns to Seabed.

Depth In: 586.5m
Depth Out: 1537.0m
Drilled: 952.0m in 21.90hrs
Grade: 1-1-WT-A-E-I-NO-TD



WOB: 5.4 - 20.4 kbf
RPM: 154 - 197
GPM: 890 - 1283
SPP: 1870 - 4011 psi

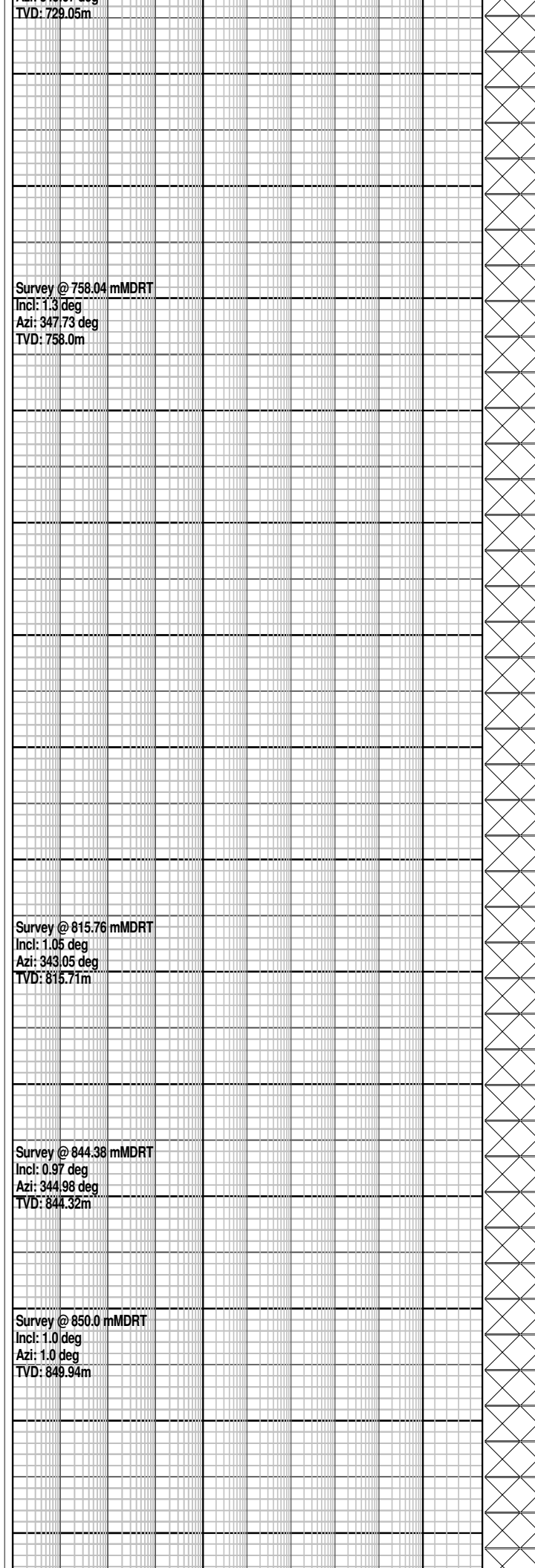
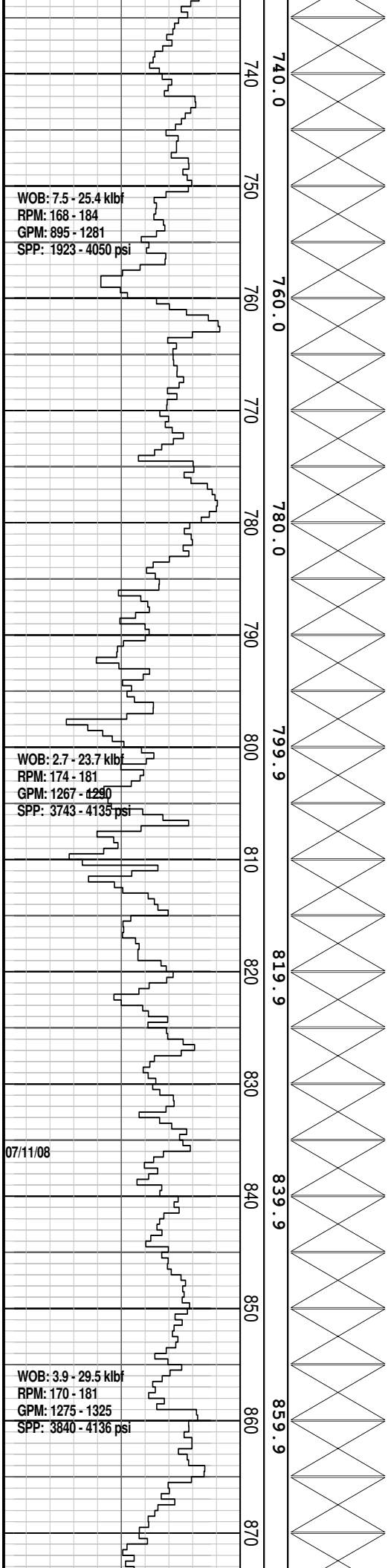
Survey @ 613.93 mMDRT
Incl: 1.24 deg
Azi: 346.95 deg
TVD: 613.93m

Survey @ 641.31 mMDRT
Incl: 1.32 deg
Azi: 347.27 deg
TVD: 641.30m

Survey @ 729.08 mMDRT
Incl: 1.27 deg
Azi: 349.67 deg

Drill 406mm hole w/seawater and hi-vis gel sweeps. Returns to Seabed.

Drill 406mm hole w/seawater and hi-vis gel sweeps. Returns to Seabed.



TVD: 729.05m

Survey @ 758.04 mMDRT
 Incl: 1.3 deg
 Azi: 347.73 deg
 TVD: 758.0m

Survey @ 815.76 mMDRT
 Incl: 1.05 deg
 Azi: 343.05 deg
 TVD: 815.71m

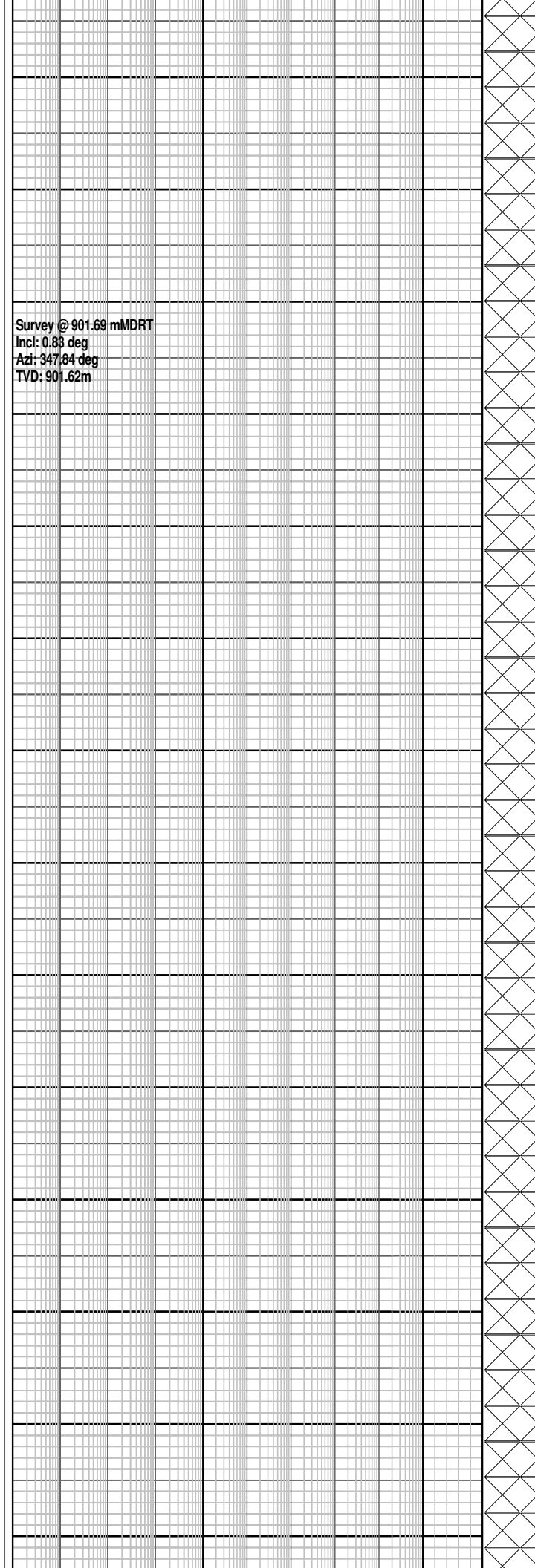
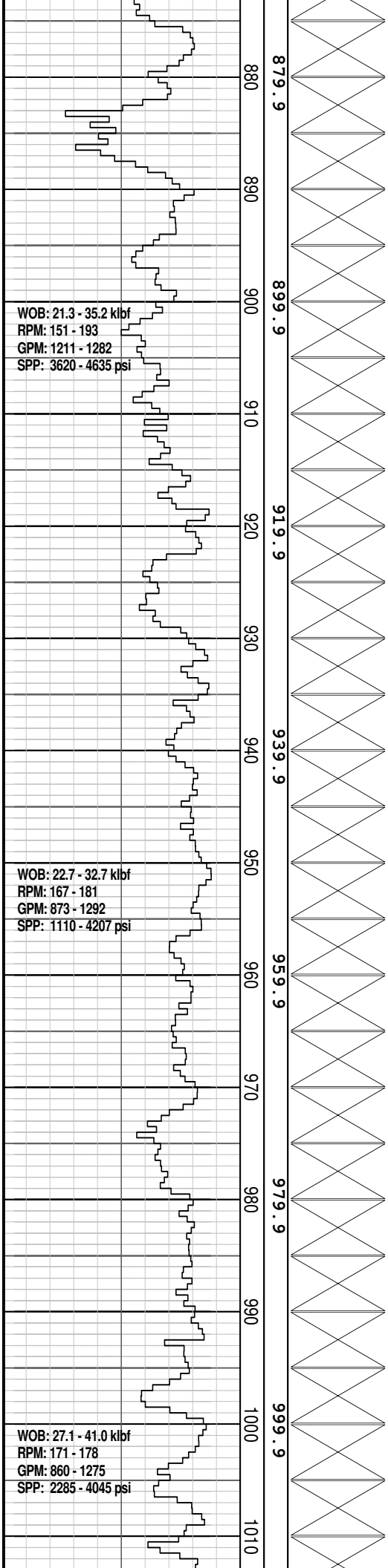
Survey @ 844.38 mMDRT
 Incl: 0.97 deg
 Azi: 344.98 deg
 TVD: 844.32m

Survey @ 850.0 mMDRT
 Incl: 1.0 deg
 Azi: 1.0 deg
 TVD: 849.94m

Drill 406mm hole w/seawater and hi-vis gel sweeps. Returns to Seabed.

Drill 406mm hole w/ seawater and hi-vis gel sweeps. Returns to Seabed.

Drill 406mm hole w/ seawater and hi-vis gel sweeps. Returns to Seabed.



Survey @ 901.69 mMDRT
 Incl: 0.83 deg
 Azi: 347.84 deg
 TVD: 901.62m

Drill 406mm hole w/ seawater and hi-vis gel sweeps. Returns to Seabed.

Drill 406mm hole w/ seawater and hi-vis gel sweeps. Returns to Seabed.

Drill 406mm hole w/ seawater and hi-vis gel sweeps. Returns to Seabed.

Survey @ 1016.72 mMDRT
Incl: 0.47 deg
Azi: 350.04 deg
TVD: 1016.65m

WOB: 21.1 - 44.9 kbf
RPM: 174 - 180
GPM: 1200 - 1290
SPP: 2227 - 4220 psi

Survey @ 1074.58 mMDRT
Incl: 0.45 deg
Azi: 1.50 deg
TVD: 1074.51m

WOB: 31.7 - 56.2 kbf
RPM: 122 - 189
GPM: 1060 - 1275
SPP: 3008 - 4155 psi

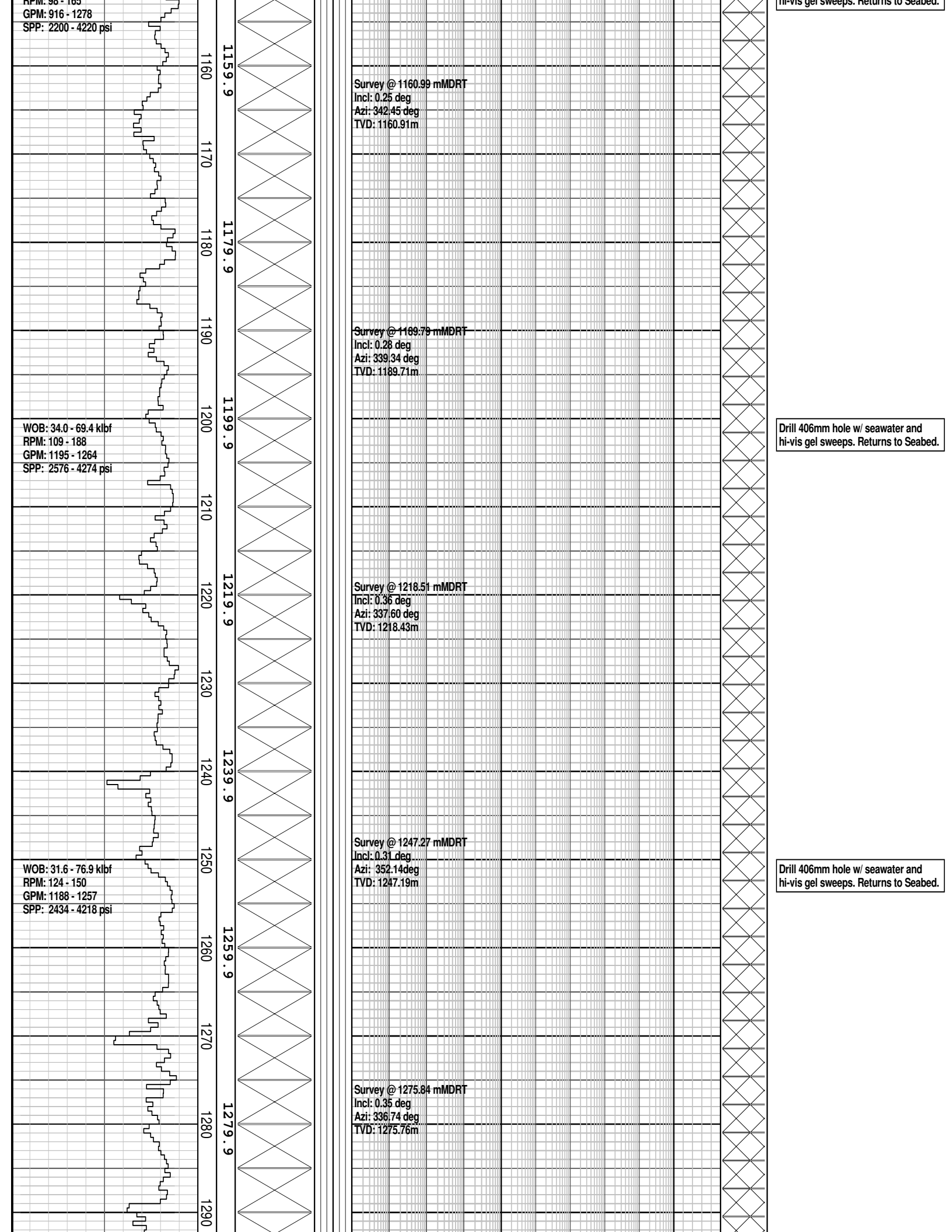
Survey @ 1132.15 mMDRT
Incl: 0.26 deg
Azi: 336.38 deg
TVD: 1132.07m

WOB: 22.0 - 57.2 kbf
RPM: 99 - 165

Drill 406mm hole w/ seawater and hi-vis gel sweeps. Returns to Seabed.

Drill 406mm hole w/ seawater and hi-vis gel sweeps. Returns to Seabed.

Drill 406mm hole w/ seawater and hi-vis gel sweeps. Returns to Seabed.



WOB: 47.8 - 77.9 kbf
RPM: 116 - 165
GPM: 1199 - 1244
SPP: 2608 - 4175 psi

WOB: 51.2 - 75.5 kbf
RPM: 126 - 161
GPM: 1211 - 1241
SPP: 2581 - 4241 psi

WOB: 45.6 - 73.5 kbf
RPM: 137 - 168
GPM: 887 - 1230
SPP: 2254 - 4161 psi

1299.9
1310
1319.9
1330
1339.9
1350
1359.9
1370
1379.9
1390
1399.9
1410
1419.9
1430

Survey @ 1333.43 mMDRT
Incl: 0.45 deg
Azi: 3337.84 deg
TVD: 1333.35m

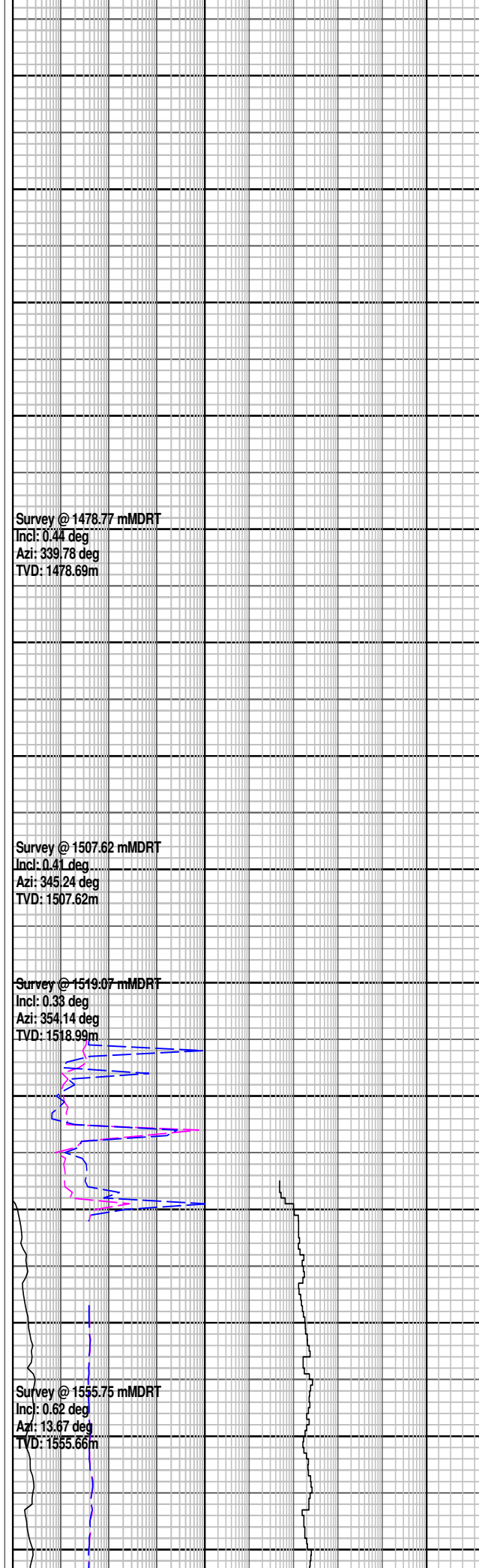
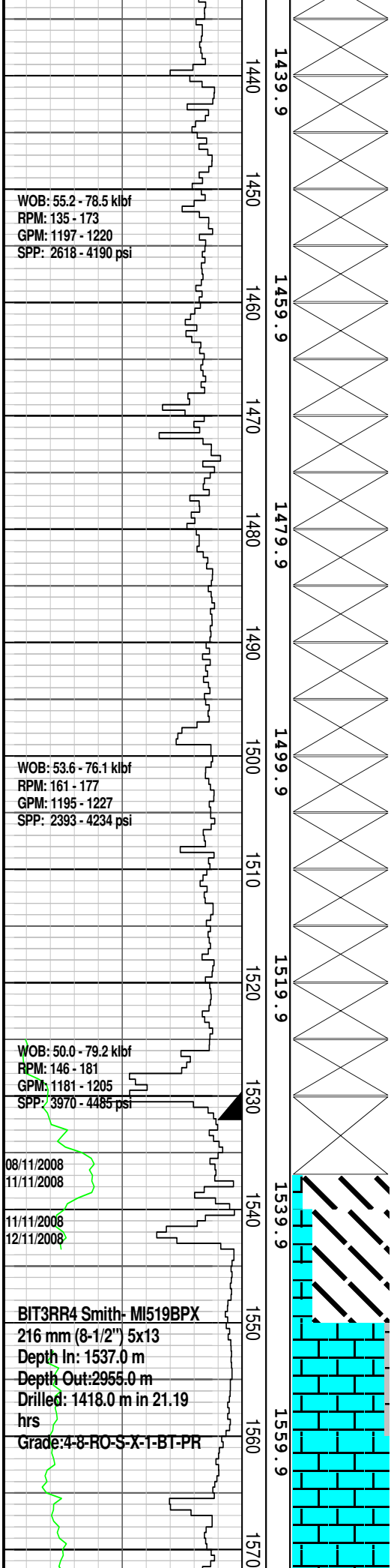
Survey @ 1362.39 mMDRT
Incl: 0.36 deg
Azi: 331.14 deg
TVD: 1362.31m

Survey @ 1391.37 mMDRT
Incl: 0.38 deg
Azi: 337.89 deg
TVD: 1391.29m

Drill 406mm hole w/ seawater and hi-vis gel sweeps. Returns to Seabed.

Drill 406mm hole w/ seawater and hi-vis gel sweeps. Returns to Seabed.

Drill 406mm hole w/ seawater and hi-vis gel sweeps. Returns to Seabed.



Drill 406mm hole w/ seawater and hi-vis gel sweeps. Returns to Seabed.

Drill 406mm hole w/ seawater and hi-vis gel sweeps. Returns to Seabed.

340mm (13-3/8") Casing Shoe @ 1532.14 mMDRT

Reached 406mm (16") Section TD @ 1537.0m at 00:30 hrs on 08/11/2008

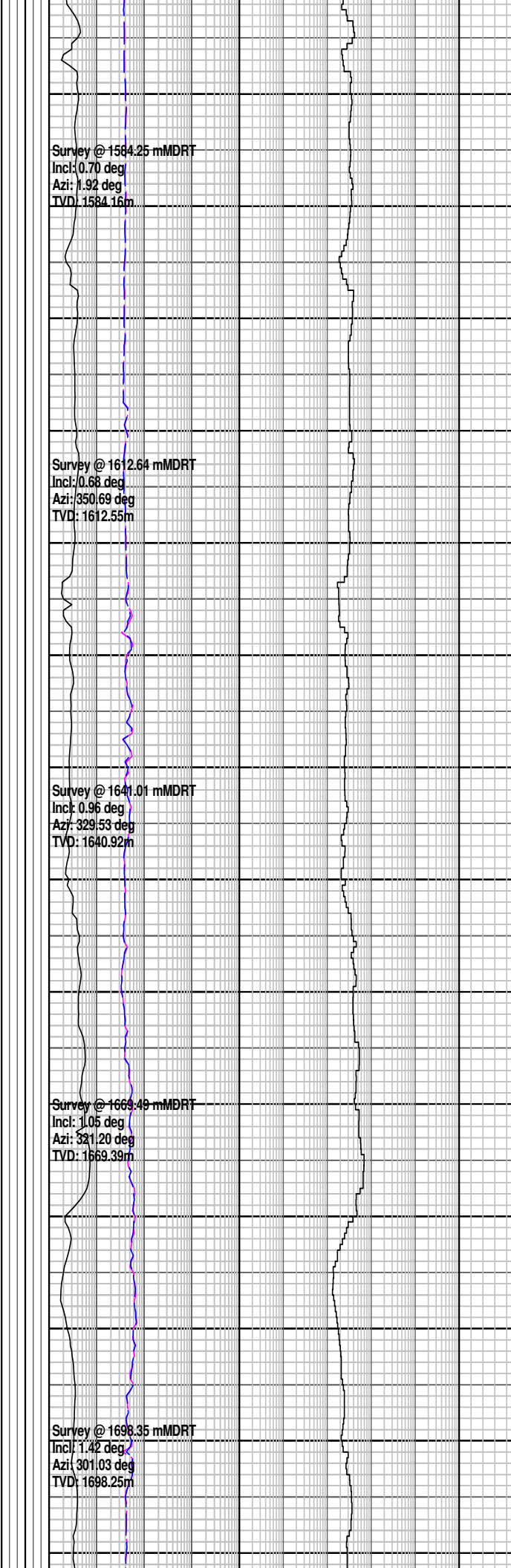
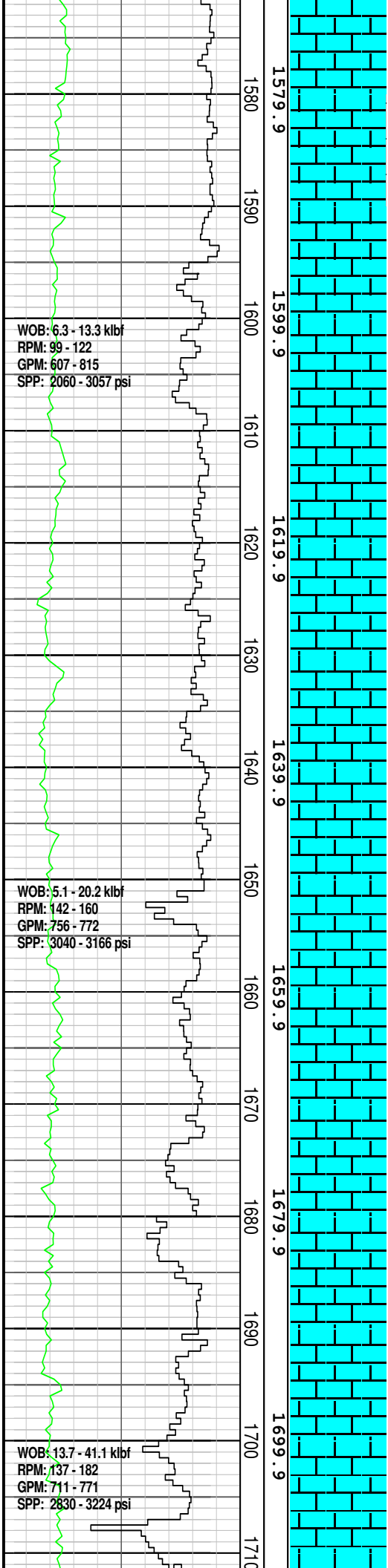
Drill with 9.6 ppg (1.15 sg) WBM

MW 1.15 V 54 PV 13 YP 20
GELS 5/7/7 Cl 60 K Sol 4.8

DOLOMITIC CLAYSTONE: It yel, or, abdt calc mat, mnr lith, mod hd-hd, sb-blky

LOT@ 1540.00 mMDRT: 1.34 sg (EMW)

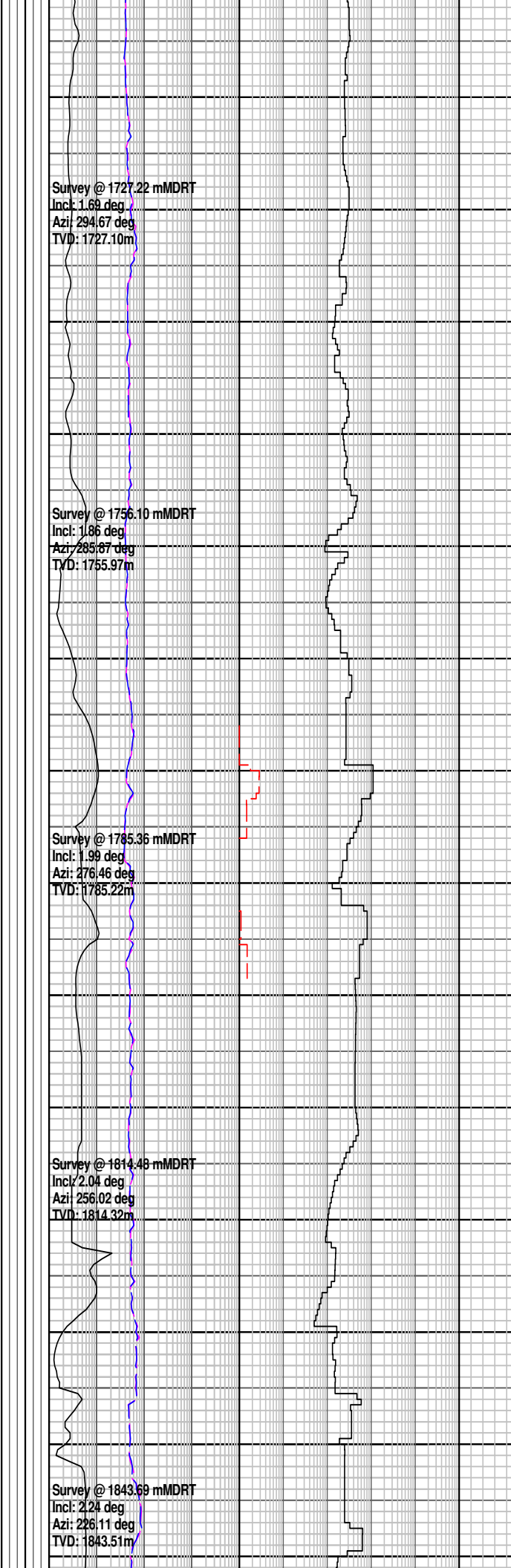
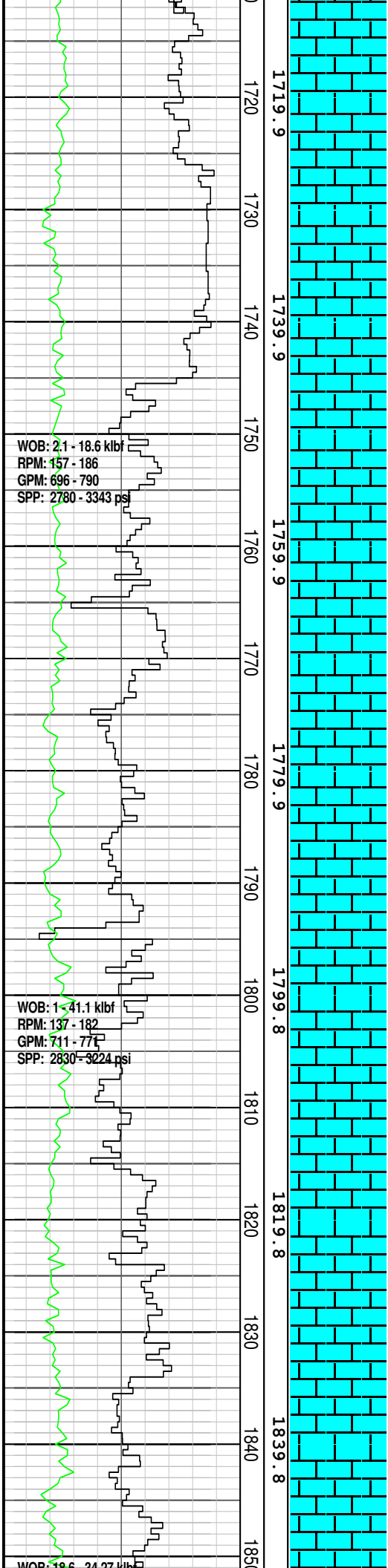
CALCULITE: It grv. It an



gry, lt gry-off wh, m gn gry, com arg mtx, occ f qtz gr, com dk lit & glauc mat, occ mic foss, occ or calc frag, frm-mod hd, sbbiky-blky

CALCULUTITE: lt gry, lt gn gry, lt gry-off wh, m gn gry, com arg mtx, occ f qtz gr, com dk lith & glauc mat, occ mic foss, occ or calc frag, slty i/p & loc grd-ARG CLCLT, frm-mod hd, sbbiky-blky

OOLITIC CALCARENITE: m lt gry-m gry, v f-v crs, pr srt, rnd-sbang, abdt arg mtx, rr micrxln, mnr qtz gr v f-v crs, wl rnd, tr lith, abdt foss, (oo, Foram, Amm), mnr glauc, lse, brit- mod hd i/p, dom n vis por, gd inf por, n shw



CALCISILTITE: m lt gry-lt olv gry, mnr m gry, abdt mtx & grad-CLCLT i/p, grad-CLCAR i/p, abdt v f dk lith, com foss (Foram & oo), abdt v f qtz gr, tr glauc, tr carb mat, sft-brit, dom frm, com sft & brit, sbblky, n vis por

CALCISILTITE: dom gnsh gry-lt olv gry, com m lt gry-lt olv gry, abdt mtx & grad-CLCLT i/p, abdt v f dk lith, mnr foss, oo, abdt v f qtz gr, tr-com v f glauc, tr carb, mat, sft-brit, dom frm, mnr sft & brit, sbblky, n vis por

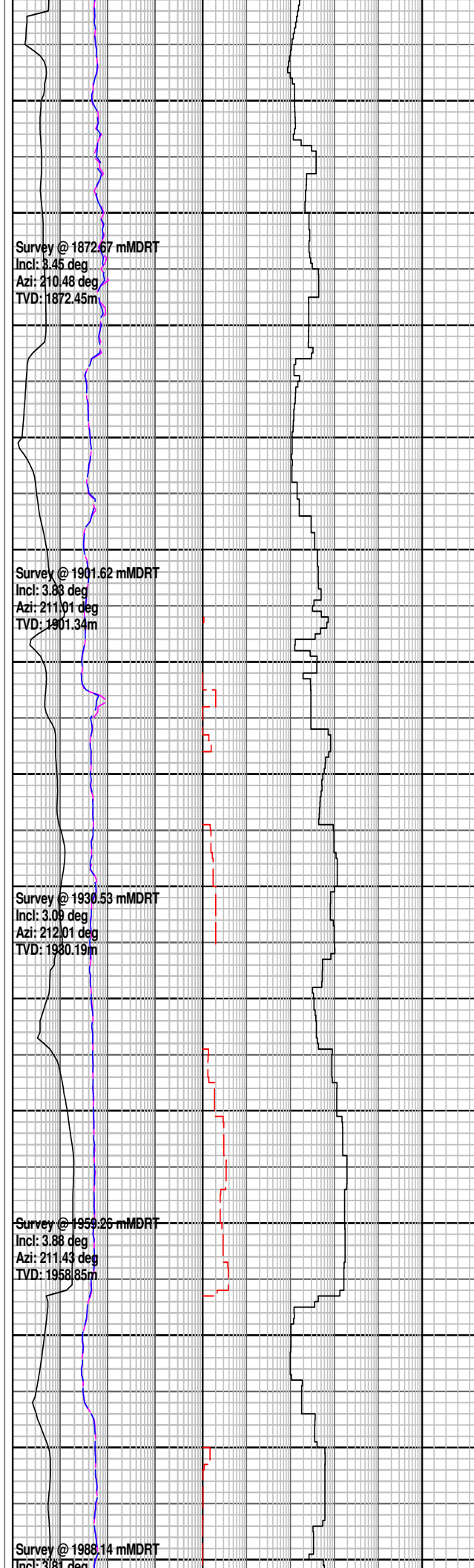
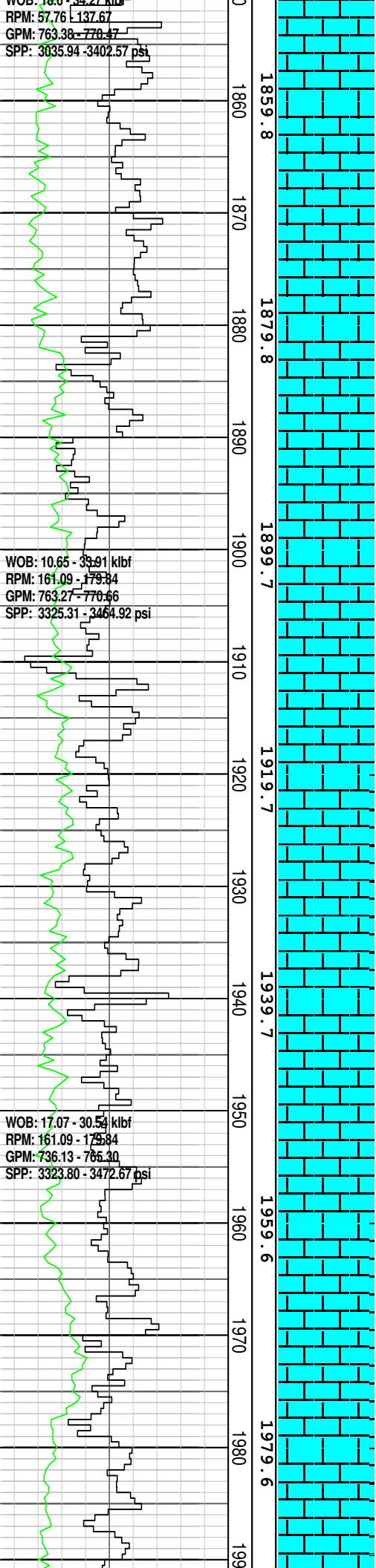
CALCARENITE: m lt gry-med gry, v f-f, wl srt, rnd-sbang, abdt arg mtx, rr micrxln, tr lith, com foss (oo, Foram, Amm), rr glauc, mnr lse, dom brit-mod hd i/p, v p vis por, tr moldic por, n shw

CALCISILTITE: m lt gry, com lt olv gry-lt gry, mnr olv gry, abdt arg mtx, mnr f dk lith, mnr oo, mnr v f qtz gr, tr glauc, tr carb mat, sft-brit, dom frm, mnr sft & brit, sbblky, n vis por, n shw

WOB: 18.0 - 32.27 kbf
RPM: 57.76 - 137.67
GPM: 763.38 - 770.47
SPP: 3035.94 - 3402.57 psi

WOB: 10.65 - 33.91 kbf
RPM: 161.09 - 179.34
GPM: 763.27 - 770.46
SPP: 3325.31 - 3464.92 psi

WOB: 17.07 - 30.53 kbf
RPM: 161.09 - 175.84
GPM: 736.13 - 765.30
SPP: 3323.80 - 3472.67 psi



Survey @ 1872.67 mMDRT
Incl: 3.45 deg
Azi: 210.48 deg
TVD: 1872.45m

Survey @ 1901.62 mMDRT
Incl: 3.88 deg
Azi: 211.01 deg
TVD: 1901.34m

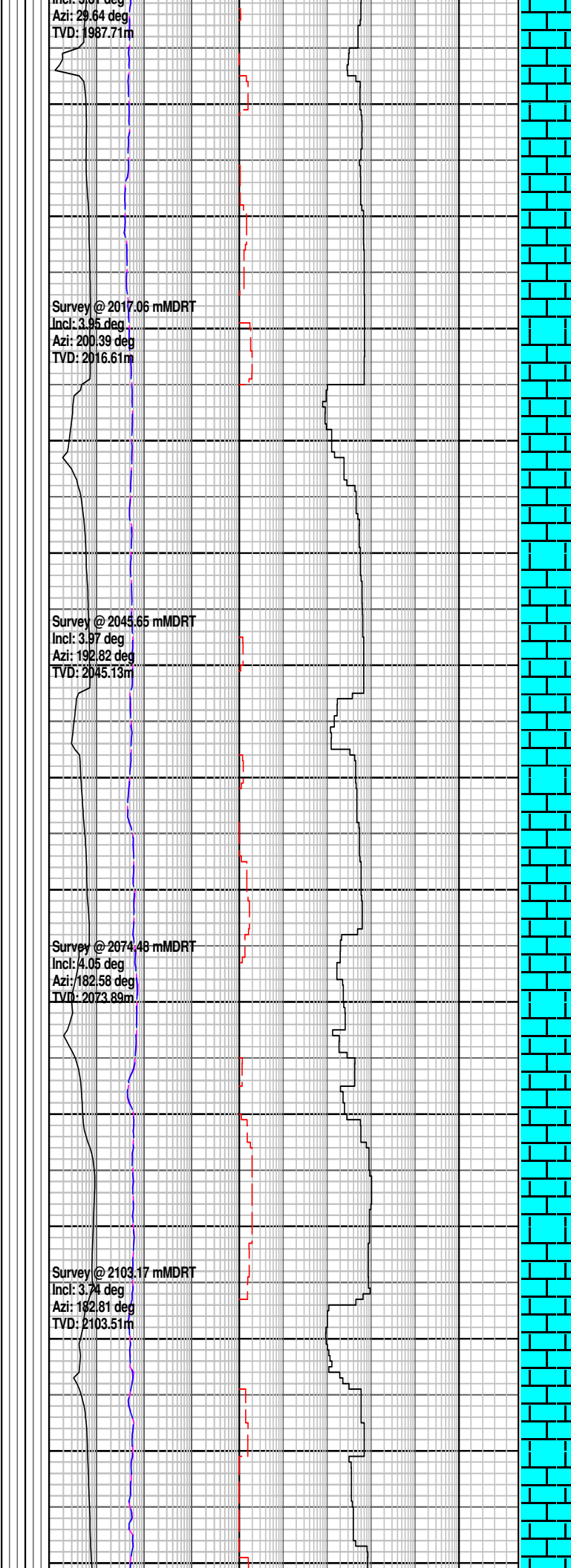
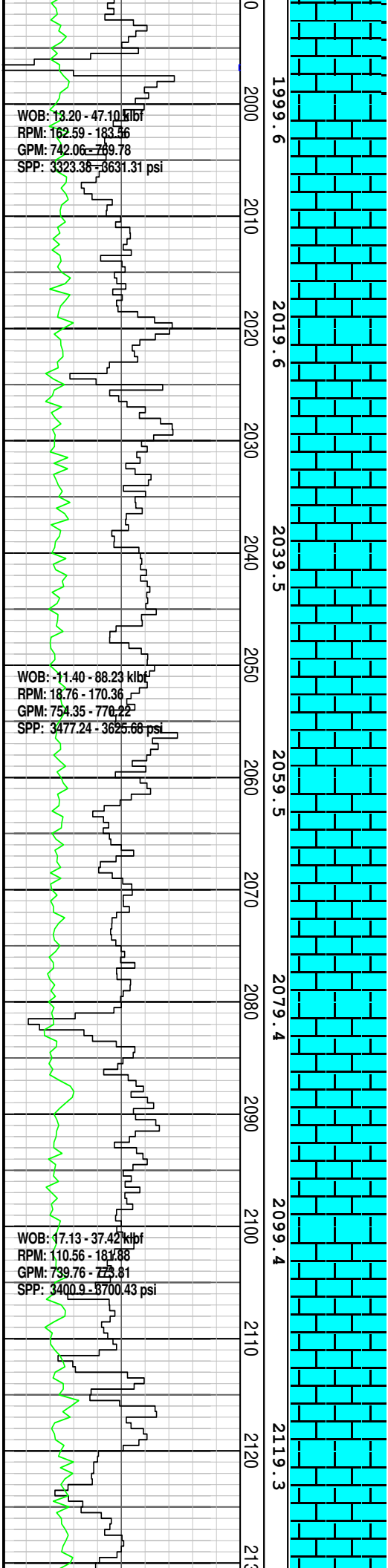
Survey @ 1930.53 mMDRT
Incl: 3.09 deg
Azi: 212.01 deg
TVD: 1930.19m

Survey @ 1959.26 mMDRT
Incl: 3.88 deg
Azi: 211.43 deg
TVD: 1958.85m

Survey @ 1988.14 mMDRT
Incl: 3.81 deg

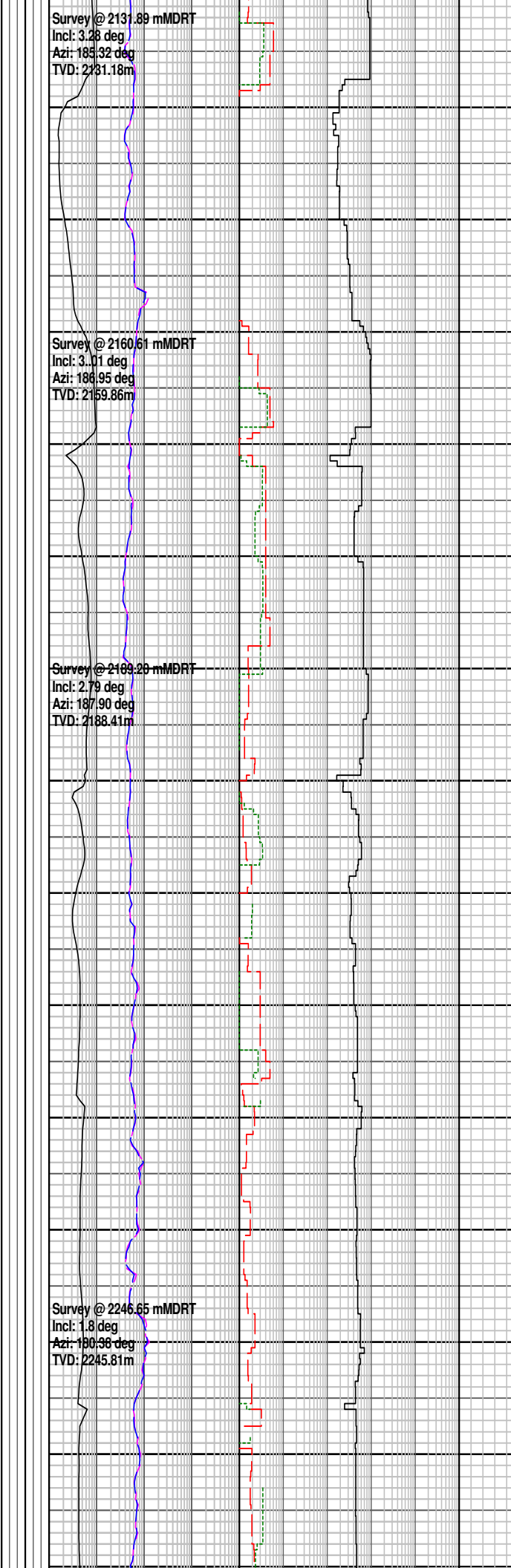
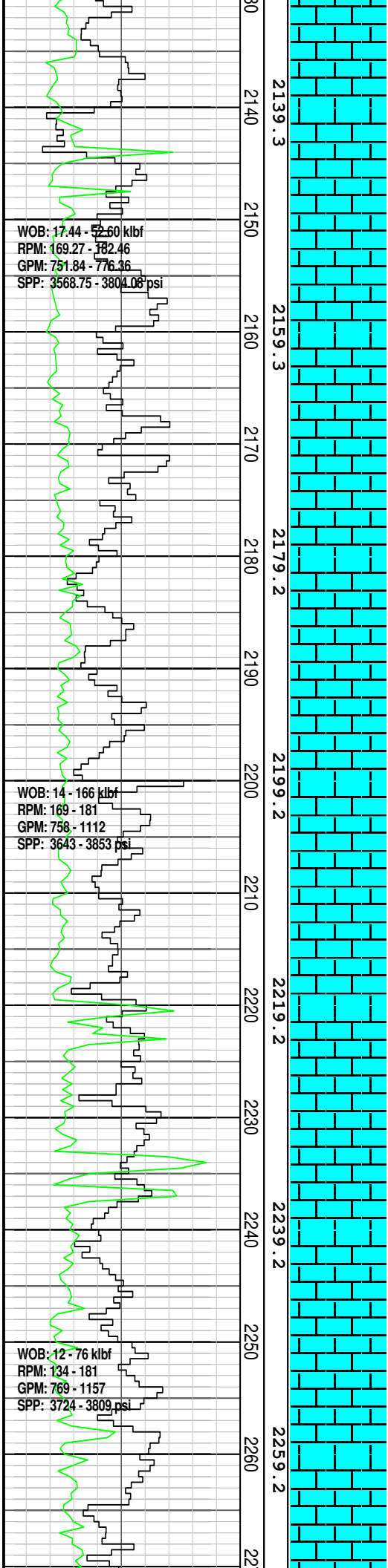
CALCILUTITE: olv gry, arg
grad-CALC CLYST i/p, mnr v
f dk lith, tr glauc mat, mnr oo,
tr carb mat, frm, sbblky, n vis
por, n shw

DOLOMITE: m dk gry- dk gry,
micrln, tr glauc mat, v hd,
ang



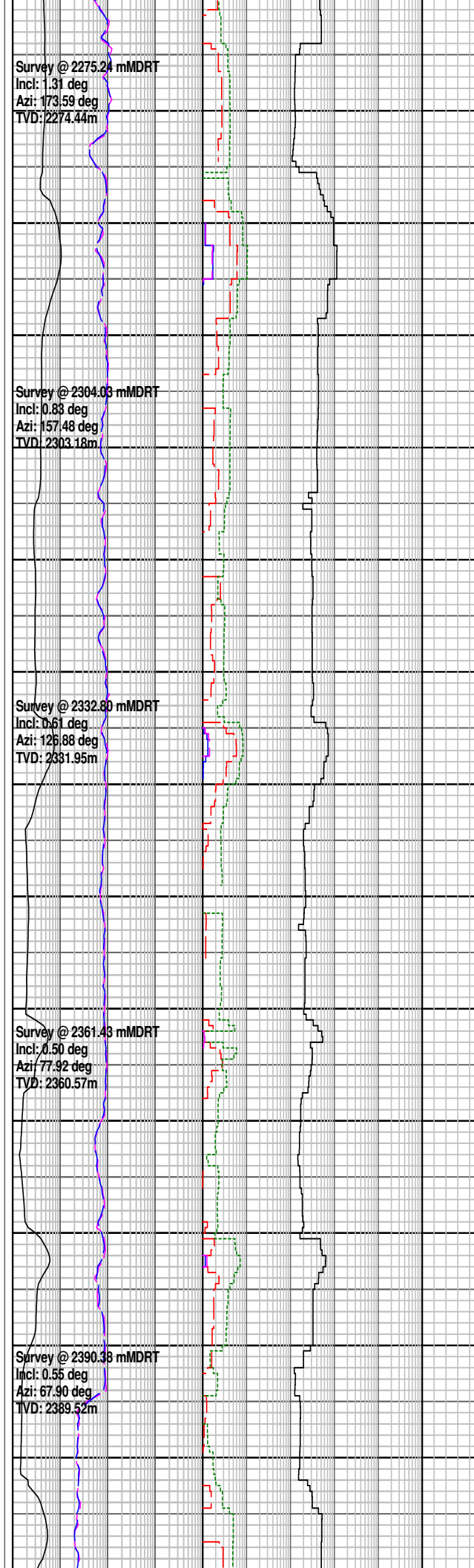
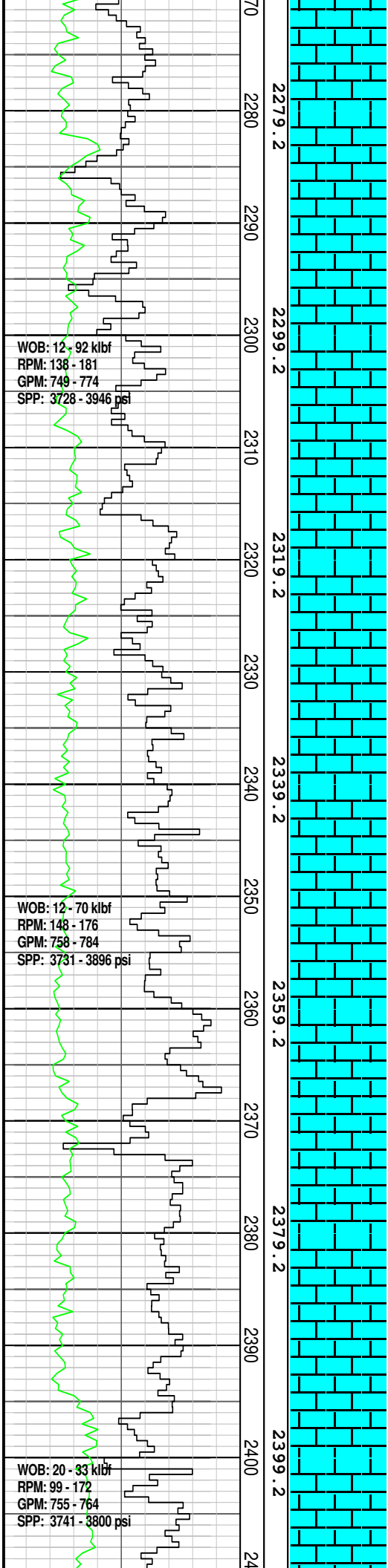
CALCILUTITE: olv gry, arg abdt v f dk lt, tr glauc mat, tr oo, tr carb mat, tr v f qtz gr, frm-brit, dom frm, com brit, sbblky, n vis por, n shw

CALCISILTITE: olv gry, gnsh gry, lt olv gry-off wh, com-abdt arg mtx & loc grd-CLCLT i/p, com v f dk lith, com oo, mnr v f fltg qtz gr, tr v f glauc, tr carb mat, frm-mod hd, sbblky, n shw



CALCILUTITE: olv gry, arg abdt v f dk lith, tr glauc mat, tr oo, tr carb mat, tr v f qtz gr, frm-brit, dom frm, com brit, sbblky, n vis por, n shw

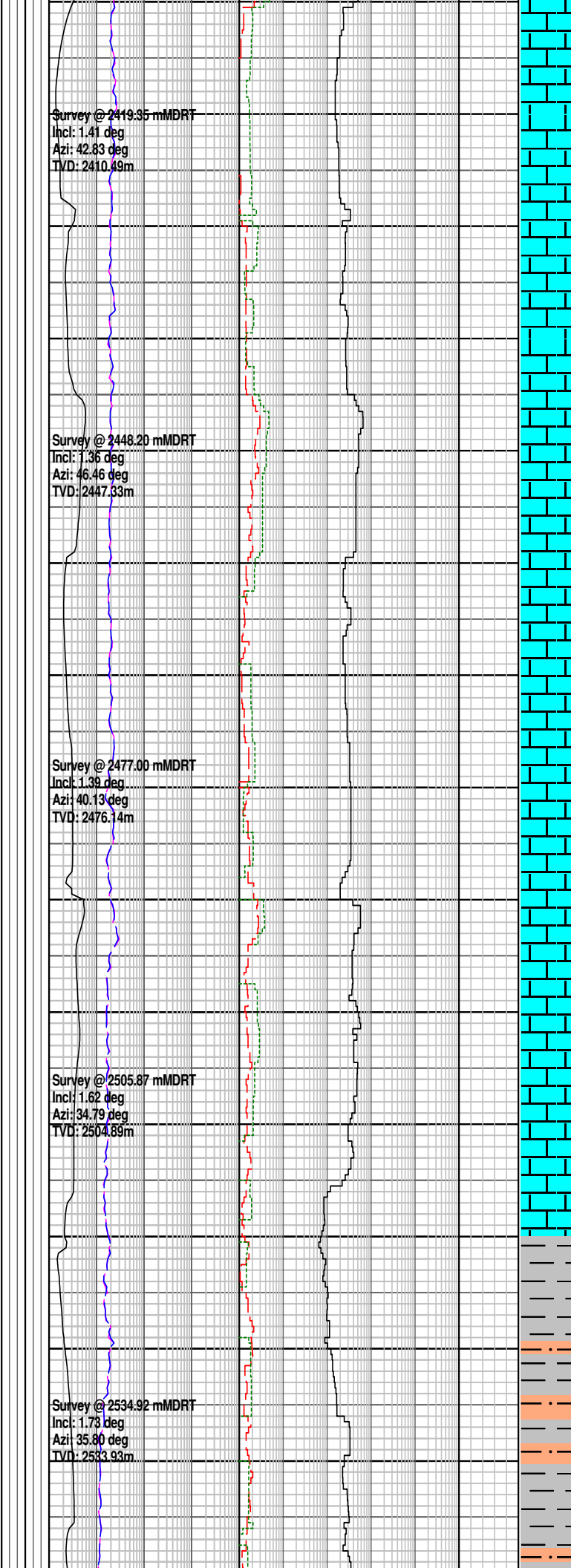
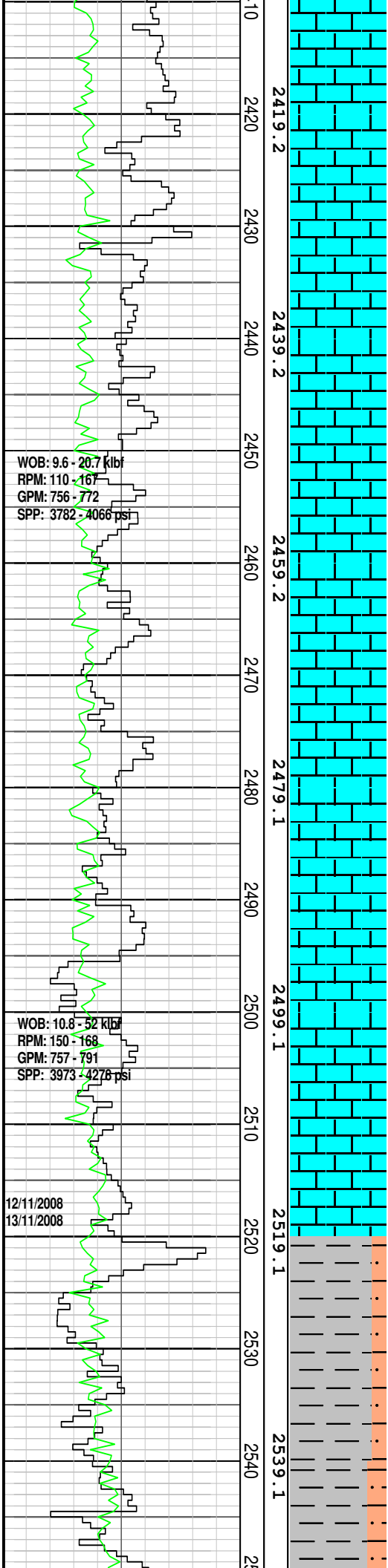
CALCISILTITE: olv gry, gnsh gry, lt olv gry-off wh, com-abdt arg mtx & loc grd-CALC CLYST i/p, loc aren, com v f dk lit, com oo, mnr v f fltg qtz gr, tr v f glauc, tr carb mat, frm-mod hd, sbblky, n vis por, sbblky, n vis por, n shw



CALCILUTITE: olv gry, arg abdt v f dk lt, tr glauc mat, tr oo, tr carb mat, tr v f qtz gr, frm-brit, dom frm, com brit, sbbly, n vis por, n shw

CALCISILTITE: olv gry, gnsh gry, lt olv gry-off wh, com-abdt arg mtx & loc grd-CALC CLYST i/p, loc aren, com v f dk lith, com oo, mnv v f fltg qtz gr, tr v f glauc, tr carb mat, frm-hd, sbbly, n vis por, sbbly, n vis por, n shw

CALCILUTITE: olv gry, arg abdt v f dk lith tr glauc mat, tr oo, tr carb mat, tr v f qtz gr, frm-brit, dom frm, com brit, sbbly, n vis por, n shw



CALCILUTITE: dom lt olv gry, lt gnsh gry, olv gry, occ v f dk lith, occ glauc mat, rr oo, rr carb mat, tr fltg qtz gr, mnr micrxn frag, rr dissep pyr, mod hd-hd, v hd i/p, sbbkly-blky, n vis por, n shw

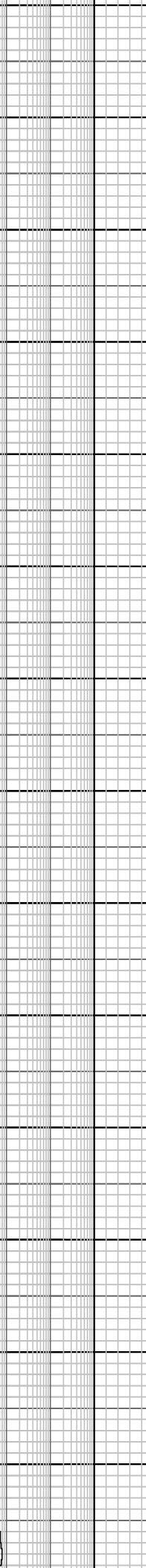
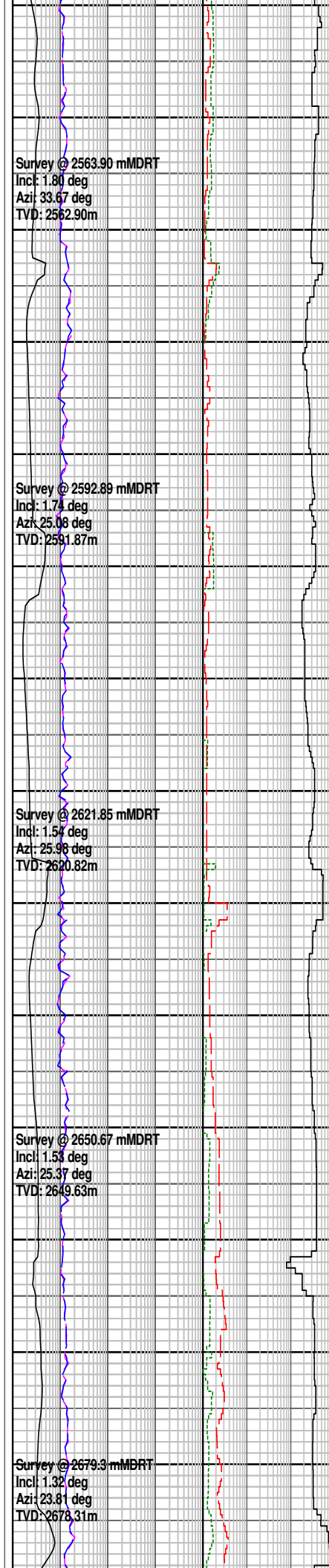
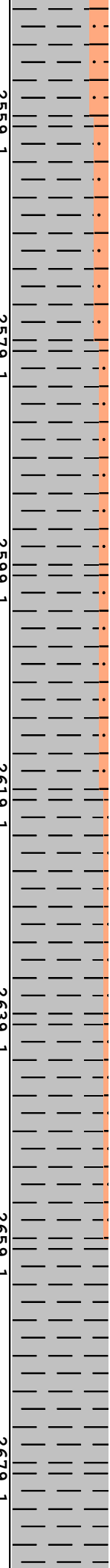
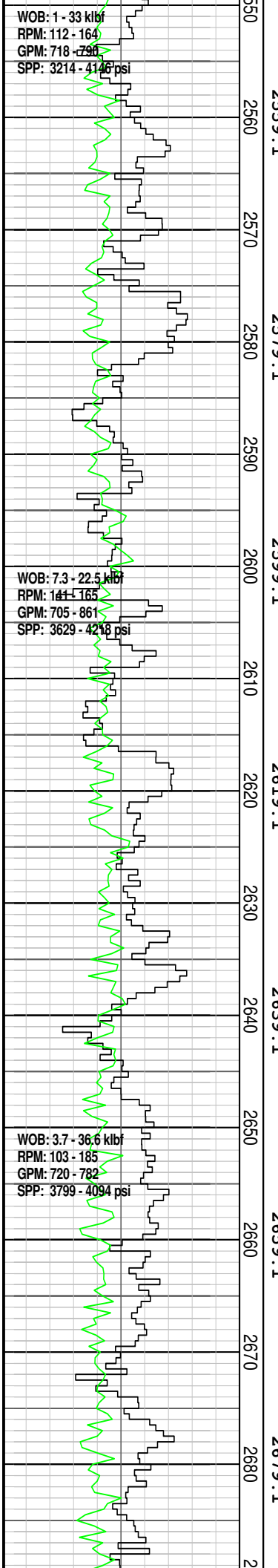
CALCISILTITE: olv gry, gnsh gry, lt olv gry-off wh, com-abdt arg mtx & loc grd-CLCLT i/p, loc aren, com v f dk lith, com oo, mnr v f fltg qtz gr, tr v f glauc, tr carb mat, frm-mod hd, sbbkly, n vis por, sbbkly, n vis por, n shw

MW 1.15 V 53 PV 13 YP 21
 GELS 6/77 CI 60 K Sol 4.8

WOB: 1 - 33 klbf
RPM: 112 - 164
GPM: 718 - 796
SPP: 3214 - 4146 psi

WOB: 7.3 - 22.5 klbf
RPM: 141 - 165
GPM: 705 - 861
SPP: 3629 - 4218 psi

WOB: 3.7 - 36.6 klbf
RPM: 103 - 185
GPM: 720 - 782
SPP: 3799 - 4094 psi



CALCAREOUS CLAYSTONE:
v lt olv gry, lt gnsh gry, lt gry-off wh, occ v f dk lith, occ glauc mat, rr oo, rr carb mat, mnr v f fltg qtz gr, rr or calc frag, mnr nod & dissem pyr, mod hd-hd, v hd i/p, sbbiky-blky

CALCAREOUS SILTSTONE:
olv gry, gnsh gry, lt olv gry-off wh, com-abdt arg mtx & loc grd-CALC CLYST i/p, loc aren, com v f dk lith, com oo, mnr v f fltg qtz gr, tr v f glauc, tr carb mat, frm-hd, sbbiky

CALCAREOUS CLAYSTONE:
v lt olv gry, lt gnsh gry, lt gry-off wh, occ glauc mat, rr oo, rr carb mat, mnr v f fltg qtz gr, mnr nod & dissem pyr, mod hd-hd i/p, sbbiky-blky

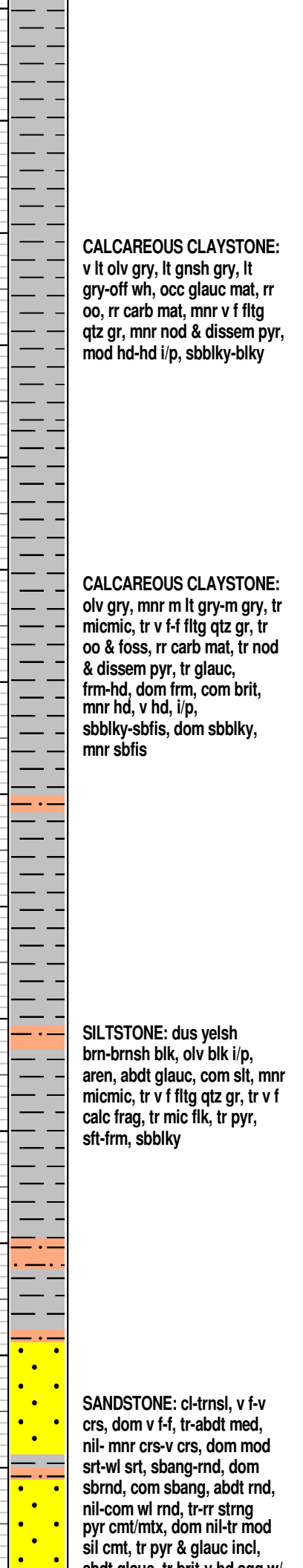
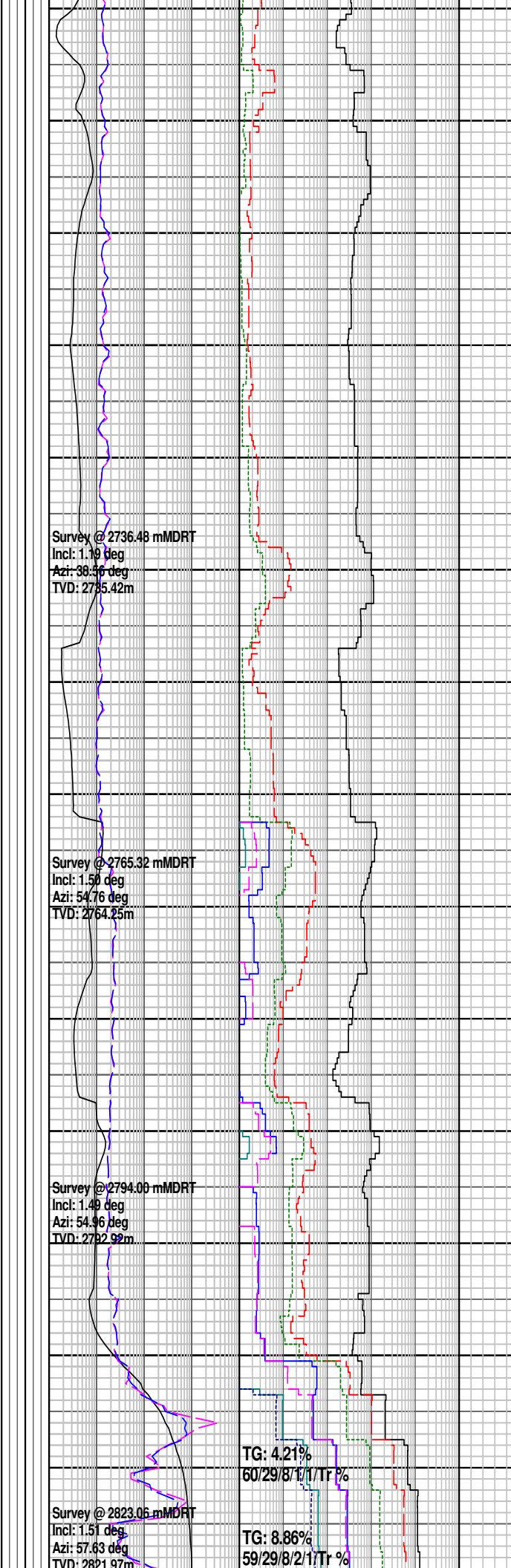
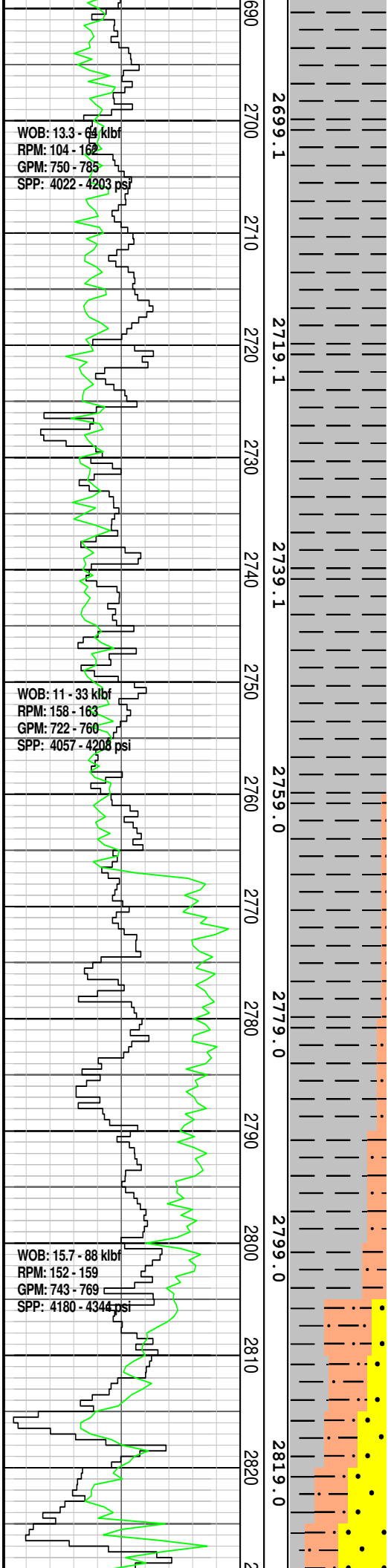
Survey @ 2563.90 mMDRT
Incl: 1.80 deg
Azi: 33.67 deg
TVD: 2562.90m

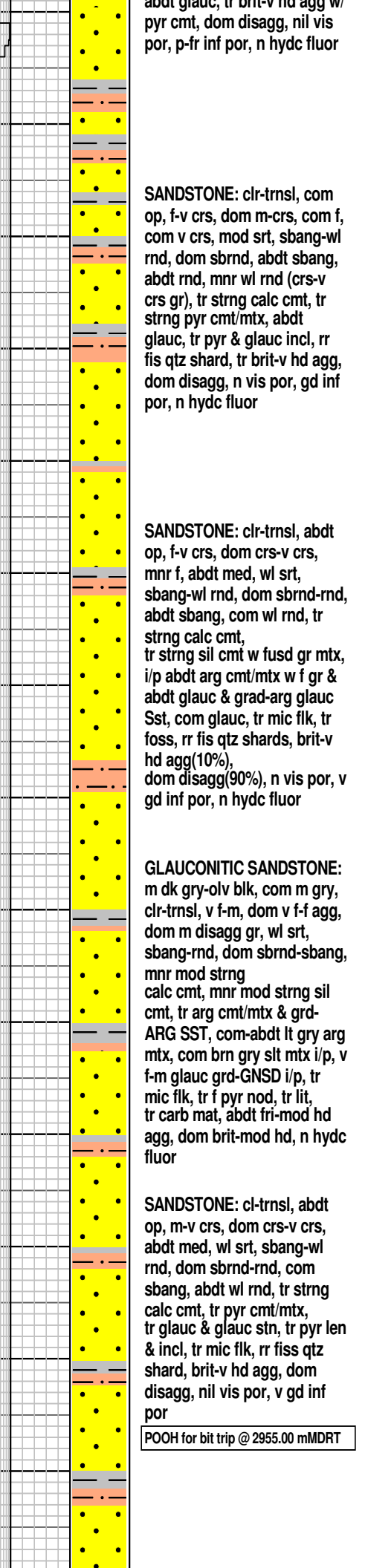
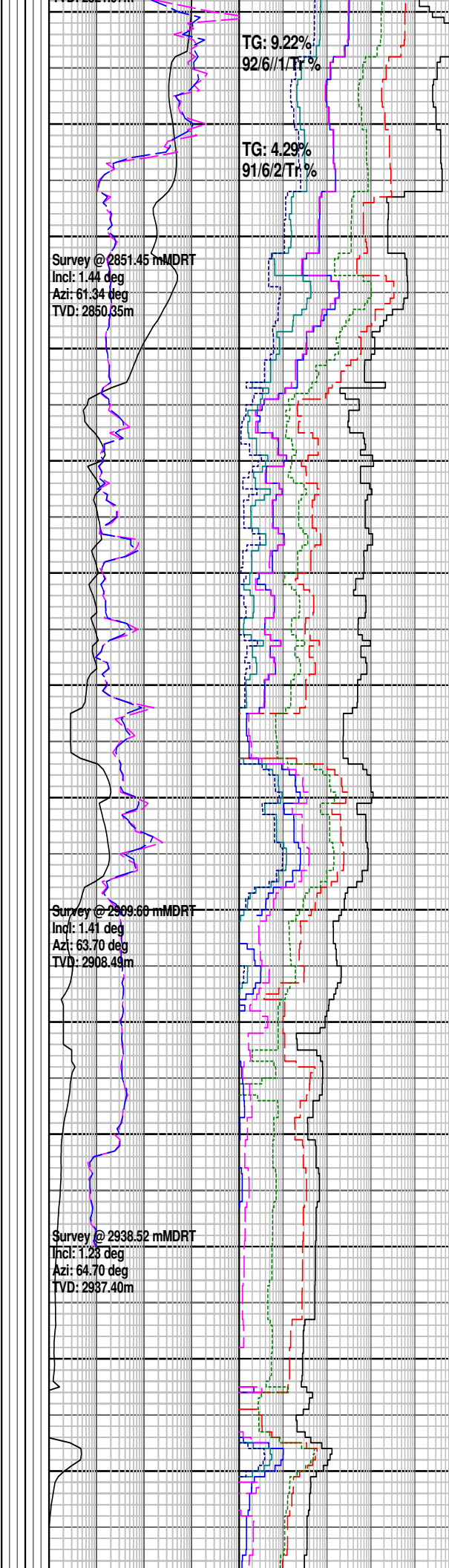
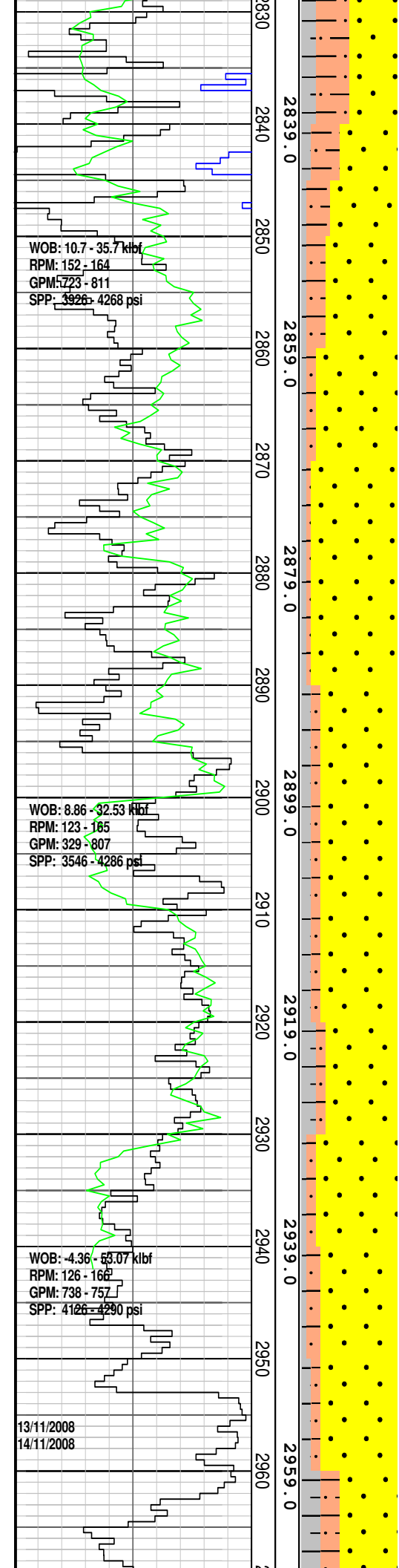
Survey @ 2592.89 mMDRT
Incl: 1.74 deg
Azi: 25.08 deg
TVD: 2591.87m

Survey @ 2621.85 mMDRT
Incl: 1.54 deg
Azi: 25.98 deg
TVD: 2620.82m

Survey @ 2650.67 mMDRT
Incl: 1.53 deg
Azi: 25.37 deg
TVD: 2649.63m

Survey @ 2679.3 mMDRT
Incl: 1.32 deg
Azi: 23.81 deg
TVD: 2678.31m



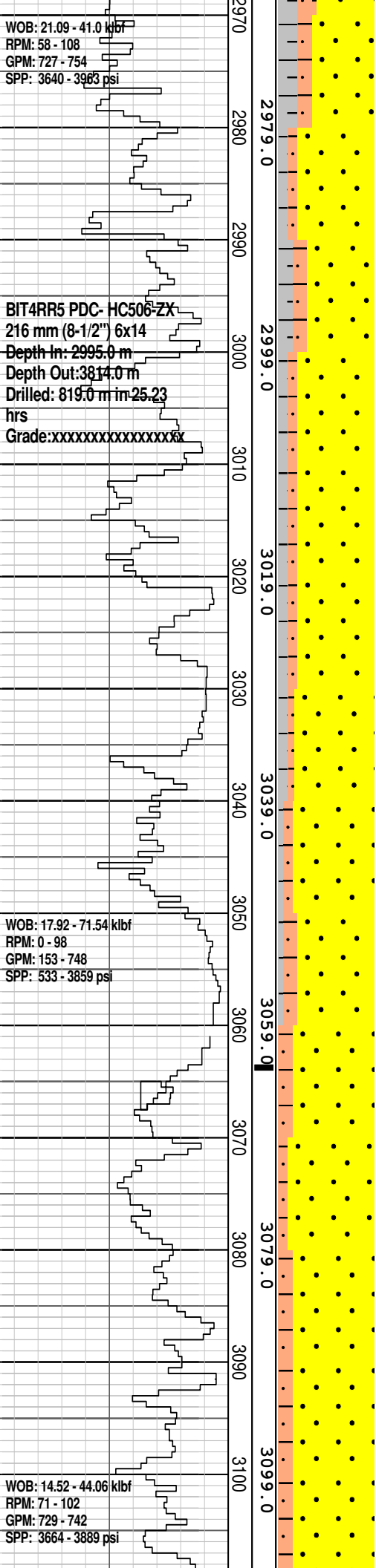


WOB: 21.09 - 41.0 klbf
RPM: 58 - 108
GPM: 727 - 754
SPP: 3640 - 3963 psi

BIT4RR5 PDC- HC506-ZX
216 mm (8-1/2") 6x14
Depth In: 2995.0 m
Depth Out: 3814.0 m
Drilled: 819.0 m in 25.23 hrs
Grade: xxxxxxxxxxxxxxxxx

WOB: 17.92 - 71.54 klbf
RPM: 0 - 98
GPM: 153 - 748
SPP: 533 - 3859 psi

WOB: 14.52 - 44.06 klbf
RPM: 71 - 102
GPM: 729 - 742
SPP: 3664 - 3889 psi



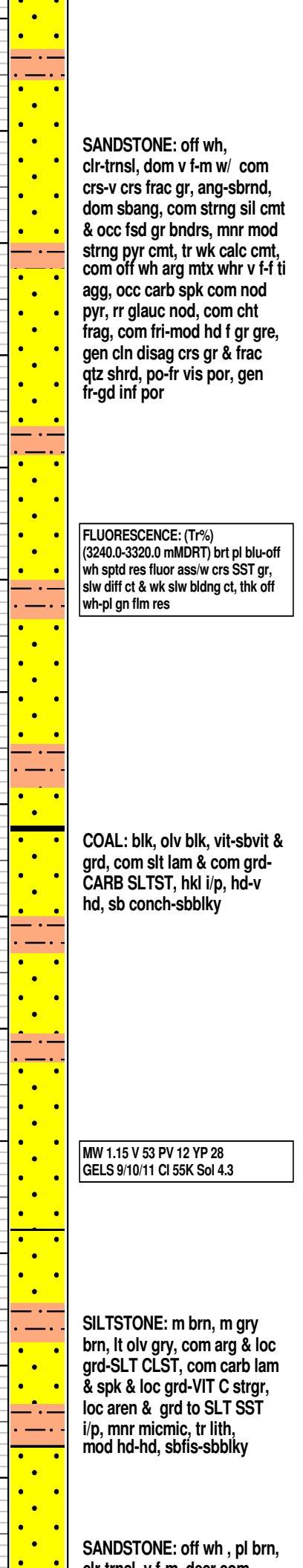
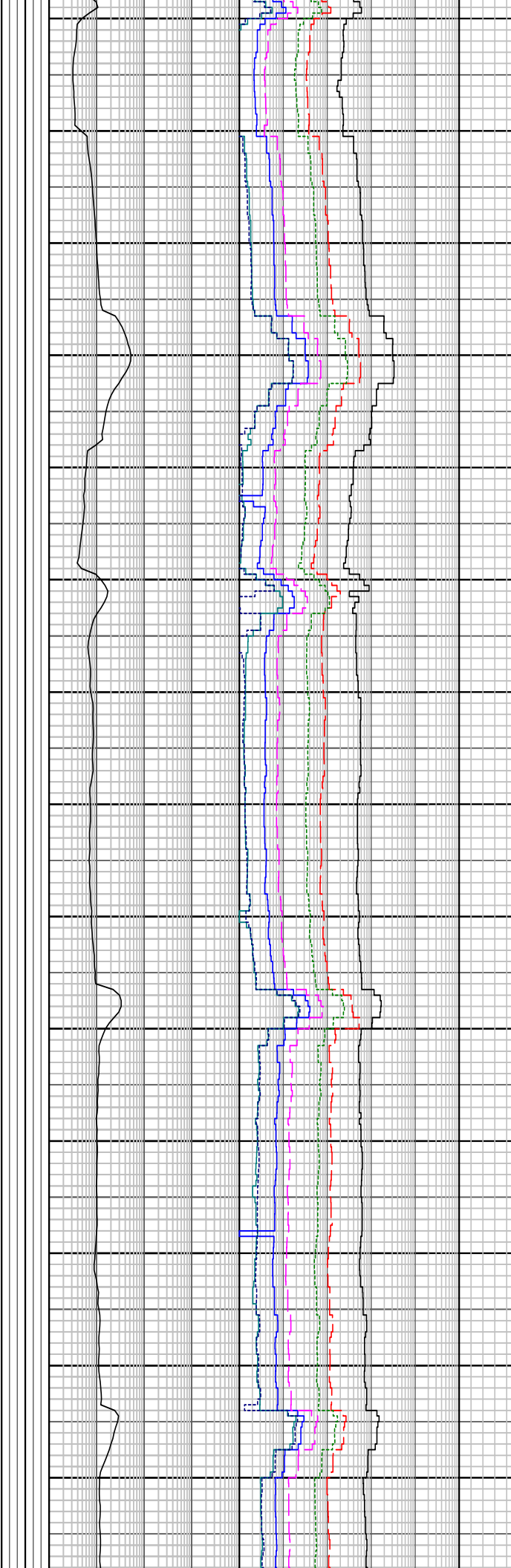
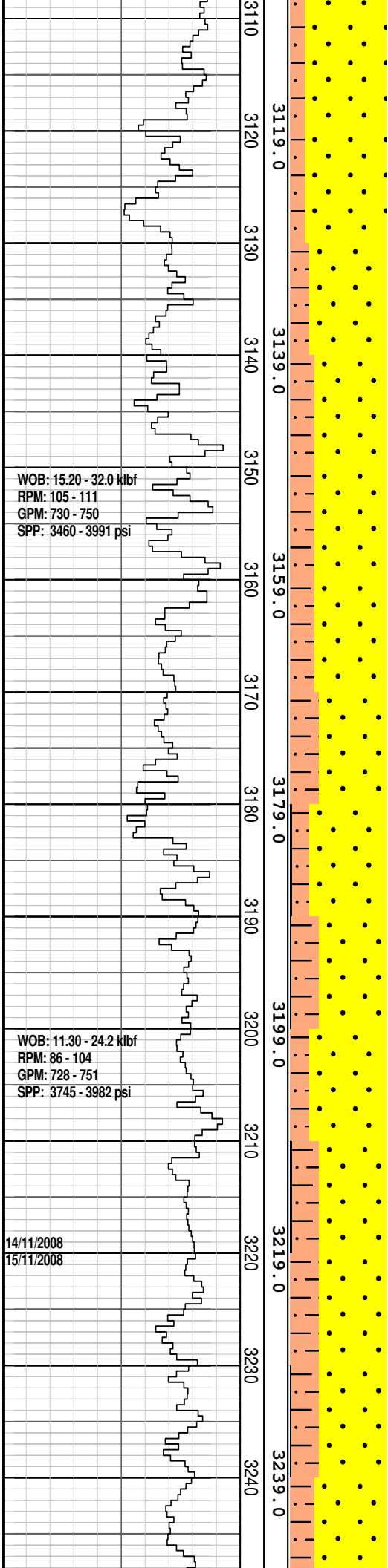
SILTSTONE: med dk gry bn, olv blk, slily aren, com f-med glauc grn, com tan lith, mnr micmic, tr-mnr nod & dissem pyr, mod hd-hd, sbbkly

CLAYSTONE: lt blsh gry, lt gry, lt gnsh gry, sil, mnr calc mat, com off wh liths, com micmic, hd-v hd, sbfis-sbbkly

SANDSTONE: cl-trnsl, fros, dom crs- v crs, com f-med grn, p-loc wl srt, ang-sbang, sbrnd w/- f-med grn, mnr wk pyr cmt, tr wk calc cmt, n vis mtx, com nod pyr cmt glauc nod, com lse med glauc grn, gen cln disagg grn, v gd inf por

FLUORESCENCE: (Tr%)
(2952.0-3130.0 mMDRT) mod bri pl
blu-off wh sptd res fluor ass/w crs
SST gr, slw diff ct & mnr slw bldg ct,
thn off wh-pl gn fim res

SILTSTONE: m dk gry brn, m brn, occ off wh-tan, argi i/p, occ f-m glauc gr, com tan lith, mnr micmic, com carb mic lam, tr-mnr nod, mod hd-hd, sbbkly



SANDSTONE: off wh, clr-trnsl, dom v f-m w/ com crs-v crs frac gr, ang-sbrnd, dom sbang, com strng sil cmt & occ fsd gr bndrs, mnr mod strng pyr cmt, tr wk calc cmt, com off wh arg mtx whr v f-f ti agg, occ carb spk com nod pyr, rr glauc nod, com cht frag, com fri-mod hd f gr gre, gen cln disag crs gr & frac qtz shrd, po-fr vis por, gen fr-gd inf por

FLUORESCENCE: (Tr%) (3240.0-3320.0 mMDRT) brt pl blu-off wh sptd res fluor ass/w crs SST gr, slw diff ct & wk slw bldng ct, thk off wh-pl gn film res

COAL: blk, olv blk, vit-sbvit & grd, com slt lam & com grd-CARB SLTST, hkl i/p, hd-v hd, sb conch-sbblky

MW 1.15 V 53 PV 12 VP 28
 GELS 9/10/11 Cl 55K Sol 4.3

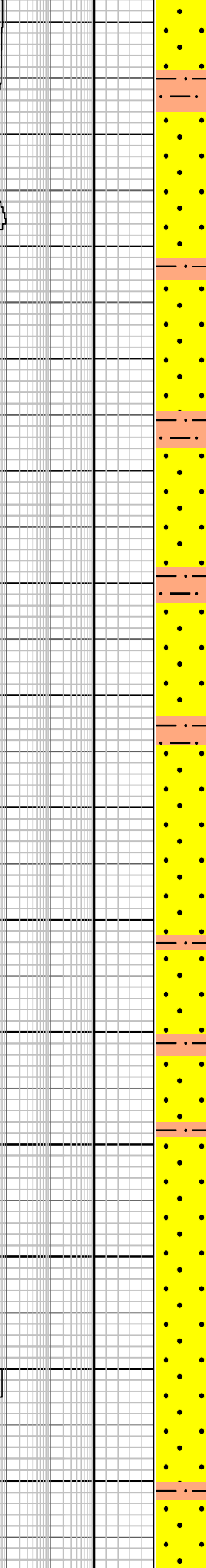
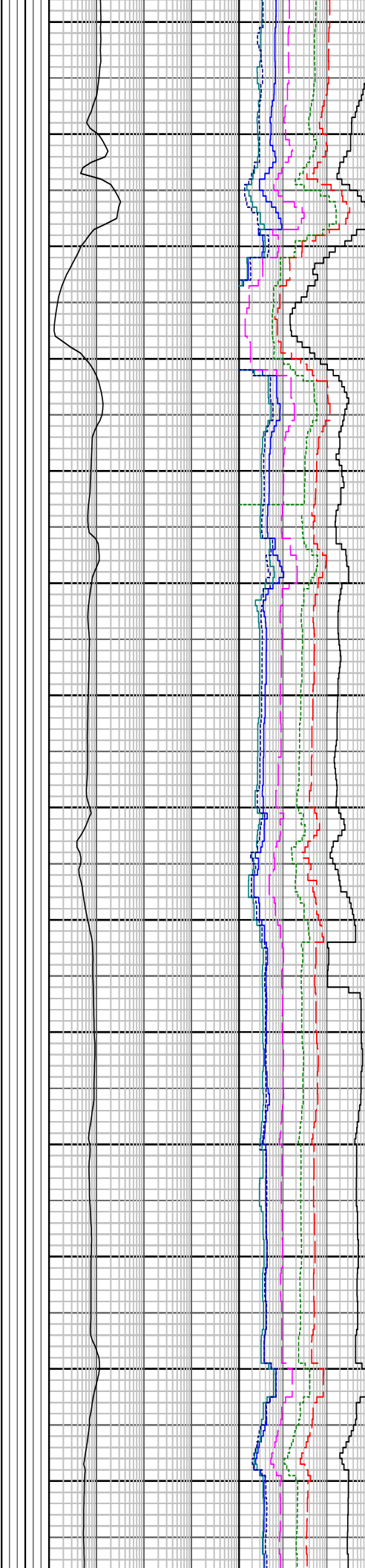
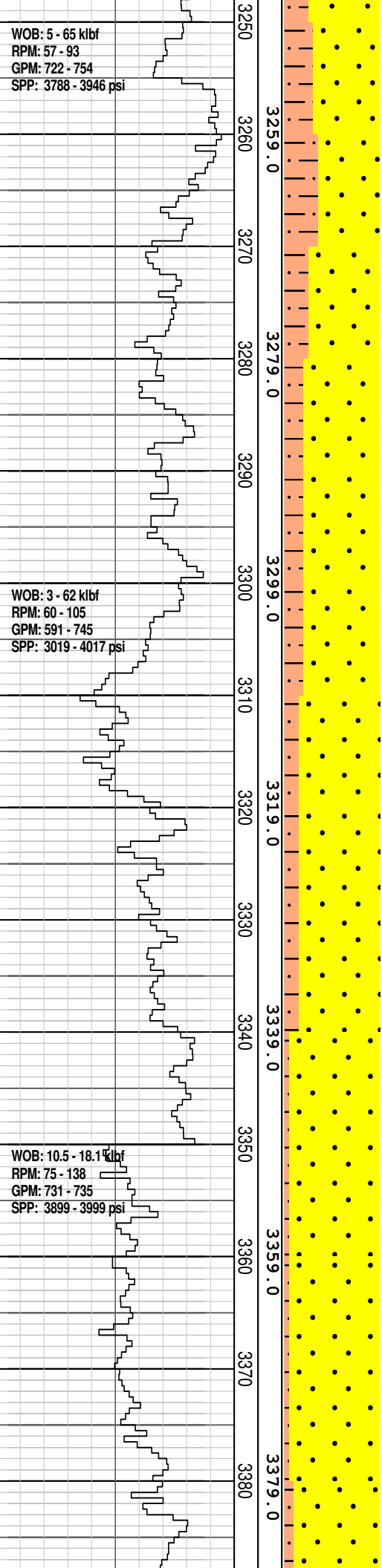
SILTSTONE: m brn, m gry brn, lt olv gry, com arg & loc grd-SLT CLST, com carb lam & spk & loc grd-VIT C strgr, loc aren & grd to SLT SST i/p, mnr micmic, tr lith, mod hd-hd, sbfis-sbblky

SANDSTONE: off wh, pl brn, clr-trnsl, v f m, deer com

WOB: 5 - 65 klbf
RPM: 57 - 93
GPM: 722 - 754
SPP: 3788 - 3946 psi

WOB: 3 - 62 klbf
RPM: 60 - 105
GPM: 591 - 745
SPP: 3019 - 4017 psi

WOB: 10.5 - 18.1 klbf
RPM: 75 - 138
GPM: 731 - 735
SPP: 3899 - 3999 psi

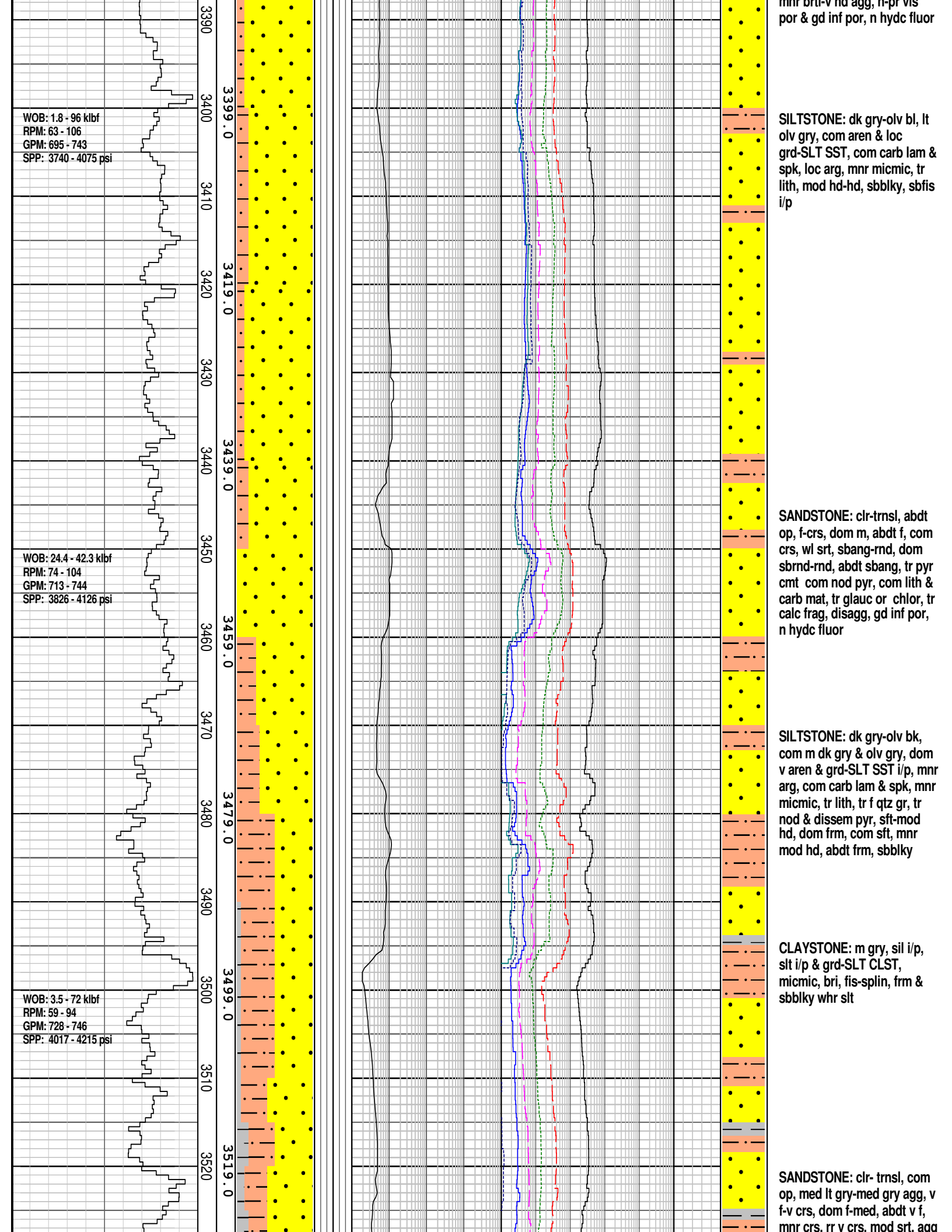


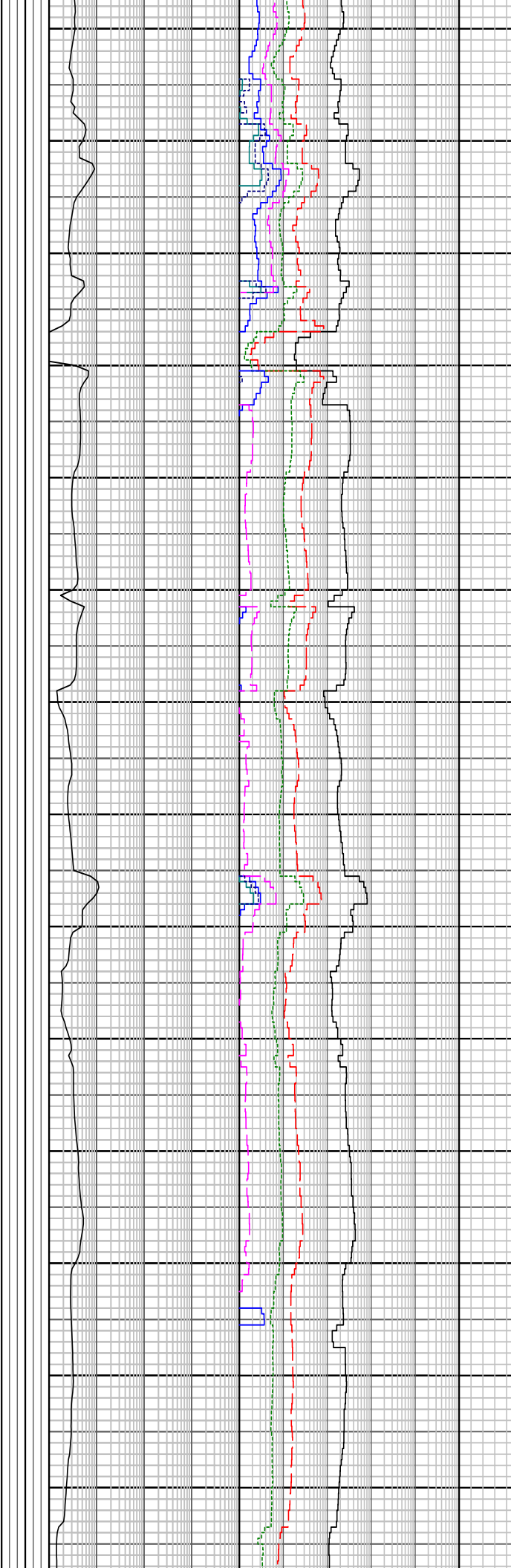
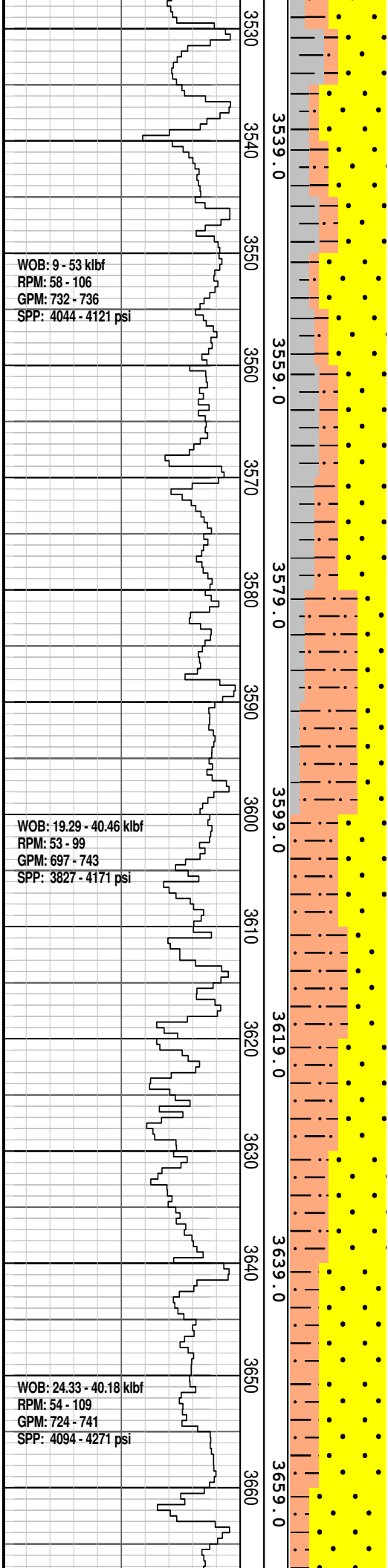
clr-trnsl, v f-m, decr com
crs-v crs frac gr, sbang-
sbrnd, com strng sil cmt &
occ fsd gr bndrs whr crs gr, tr
pyr cmt, tr wk calc cmt, com
off wh arg mtx whr v f-f ti agg,
occ pl brn slit mtx & loc
grd-ARE SLTST, com carb
spk, com nod pyr w/ occ
glauc gr, com fri-mod hd f gr
greg, gen cln disagg gr, pr-fr
vis, por in f agg, pr-gen fr inf
por, n hydc fluor

SILTSTONE: lt-m gry brn, lt
olv gry, com aren & loc
grd-SLT SST, com carb lam &
spk, loc arg, mnr micmic, tr
lith, mod hd-hd, sbblky, sbfis
i/p

SANDSTONE: clr-trnsl, fros, v
f-v crs, dom m-crs, pr std,
sbang-sbrnd, ang i/p, com wk
sil & calc cmt, rr pyr cmt, loc
com pl brn-off wh arg & slit
mtx whr v f-f gr agg, com nod
pyr w/ occ glauc gr, com lith
mnr carb spk, gen cln disagg
gr, mnr v hd, v f-f gr agg, gd
inf por, n hydc fluor

SANDSTONE: clr-trnsl, abdt
op, rr m lt gry-m gry agg, f-v
crs, dom m-crs, abdt f, abdt v
crs, agg f, mod srt, ang-rnd,
dom sbang-sbrnd, com ang &
rnd, rr mod sil cmt, rr pyr
cmt, wh arg mtx, mnr nod
pyr, com lith & carb spk, tr
chrt, tr mic flks, dom disagg,
mnr but v hd agg, n pyric





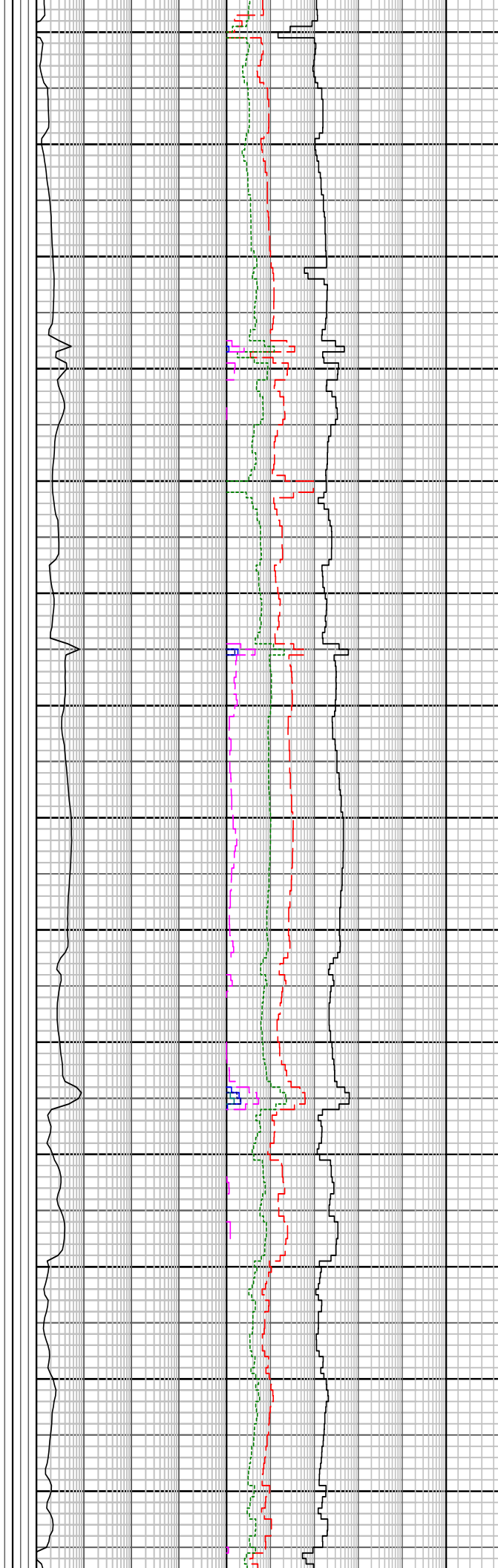
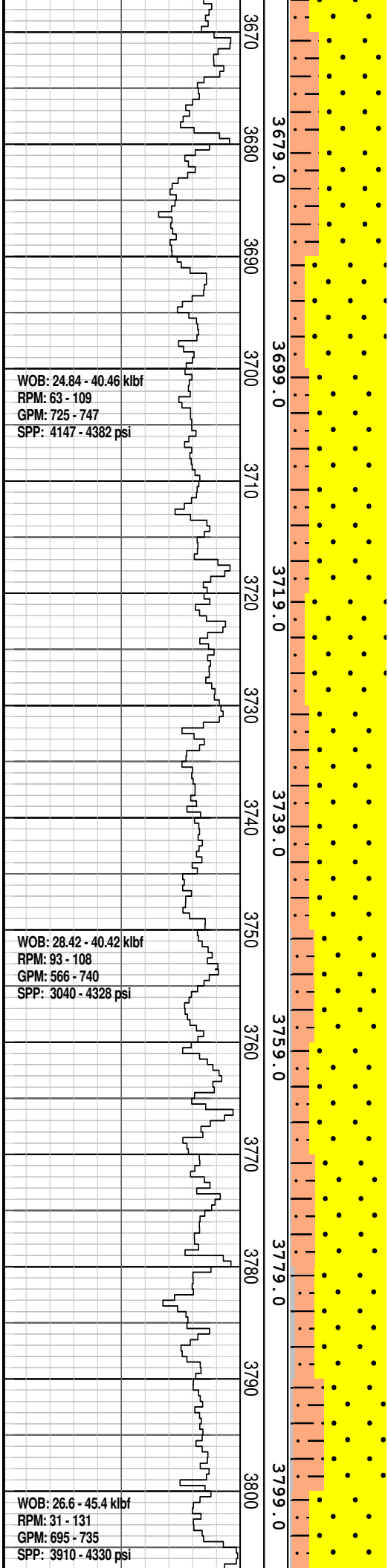
are v f-f & wl srt, sbang- rnd, dom sbang-sbrnd, com rnd, tr pyr cmt, tr strng calc cmt w/fis agg, com arg cmt/mtx, mnv nod pyr, com lith & carb spks, tr glauc (poss chlor), tr mic flk, dom disagg, abdt fri-brit agg, pr vis & inf por, n hydc

SANDSTONE: clr-trnsl, com op, med lt gry-med gry agg, v f-v crs, dom f-med, com v f, mnv crs, rr v crs, mod srt, agg f & wl srt, sbang-rnd, dom sbang-sbrnd, com rnd, tr wk- i/p strng sil cmt, rr pyr cmt, tr strng calc cmt w/ fis agg, com arg cmt/mtx, com nod pyr, com lith & carb spk, tr glauc, tr mic flk, tr qtz shard, dom disagg, abdt fri-hd agg, po vis & tr inf por, hydc fluor, min fluor

FLUORESCENCE: (tr-10%)(3515-3580 mMDRT) dll-mnr mod brit yelsh gn-pa org ptchy fluor assoc w/ calc cmt grn, n dir cut & n c/c, n r/r

SILTSTONE: dom olv gry, olv blk, dom aren & grdg- SLT SST i/p, arg i/p & grdg- SLT CLST, com carb lam & mat, micmic, com lith, tr nod & dissep pyr, tr v f glauc, com arg mtx, sft-brit, dom sft-firm, com brit, sbbkly

SANDSTONE: clr- trnsl, com op, med dk gry-med gry agg, v f-v crs, dom med-crs, com v f, abdt f, com v crs, pr srt, agg f & wl srt, sbang-rnd, dom sbang-sbrnd, com rnd, tr wk- i/p strng sil cmt, mnv pyr cmt, tr strng calc cmt w/ fis agg, tr dol cmt, com arg cmt/mtx, com slit mtx & grdg- SLT SST, tr disp calc mtx, mnv nod pyr.



com lith & carb spks, tr glauc,
 tr qtz shards, dom disagg,
 abdt fri-hd agg, pr vis & fr inf
 por, n hydc fluor

SILTSTONE: olv blk, brnsh
 gry, olv gry, dom aren &
 grdg- SLTY SST i/p, arg i/p &
 grdg- SLTY CLYST, com carb
 lam & spk, com micmic, abdt
 lith, com dissem pyr, tr v f,
 glauc, mod hd-hd, sbblky

SANDSTONE: off wh, trnsl &
 fros, v f-v crs, dom f-med,
 ang-sbang, pr srt, com strng
 sil cmt, mnr wk calc cmt & loc
 com strng pyr cmt, com-abdt
 off wh arg mtx w/-v f-f gr
 agg, abdt ang frac v crs
 shards w/ occ fsd gr bndy,
 com- abdt nod pyr, occ lith &
 carb spk, v pr vis por in hd-v
 hd f gr agg, gen fr- gd inf por,
 n hydc fluor

MW 1.15 V 58 PV 15 YP 31
 GELS 10/12/13 Cl 57K Sol 4.4

CLAYSTONE: lt blush gn,
 sil, occ v f lith, tr micmic,
 mod hd-hd, v hd i/p, sbfis

SANDSTONE: off wh, trnsl &
 fros, v f-v crs, dom med,
 ang-sbang, pr srt, com strng
 sil cmt, mnr wk calc cmt & loc
 mnr strng pyr cmt, com-abdt
 off wh arg mtx w/ com carb
 mic lam w/ v f-f gr agg, abdt
 ang frac v crs shards w/ occ
 fsd gr boundrs, abdt nod pyr,
 occ lith & carb spk, tr rk flour
 & bit metam, v pr vis por-v hd
 f gr agg, gen fr-gd
 inf por, n hydc fluor

SILTSTONE: lt-m brn, olv gry,
 pl gry, m-dk brn w/ com-abdt
 f-crs glauc gr, aren & com
 grdg- SLTY SST, com aren

